

POWERHOUSE

A photograph of a modern building with a balcony. Two men are silhouetted against a bright, hazy sky. One man is pointing towards the horizon. The building has a balcony with a metal railing. The overall scene is in silhouette, with the sky being the brightest part of the image.

office@powerhouse-company.com
powerhouse-company.com

Index

About⁵

Floating Buildings¹⁷

Hotels⁴⁷

Luxury Living⁷⁵

Public Space¹²⁵

Credits¹⁶¹

About



'Our mission is to create meaningful spaces that enhance people's lives.'



Nanne de Ru
Founding Partner

Our projects arise from the collective intelligence of everyone involved.

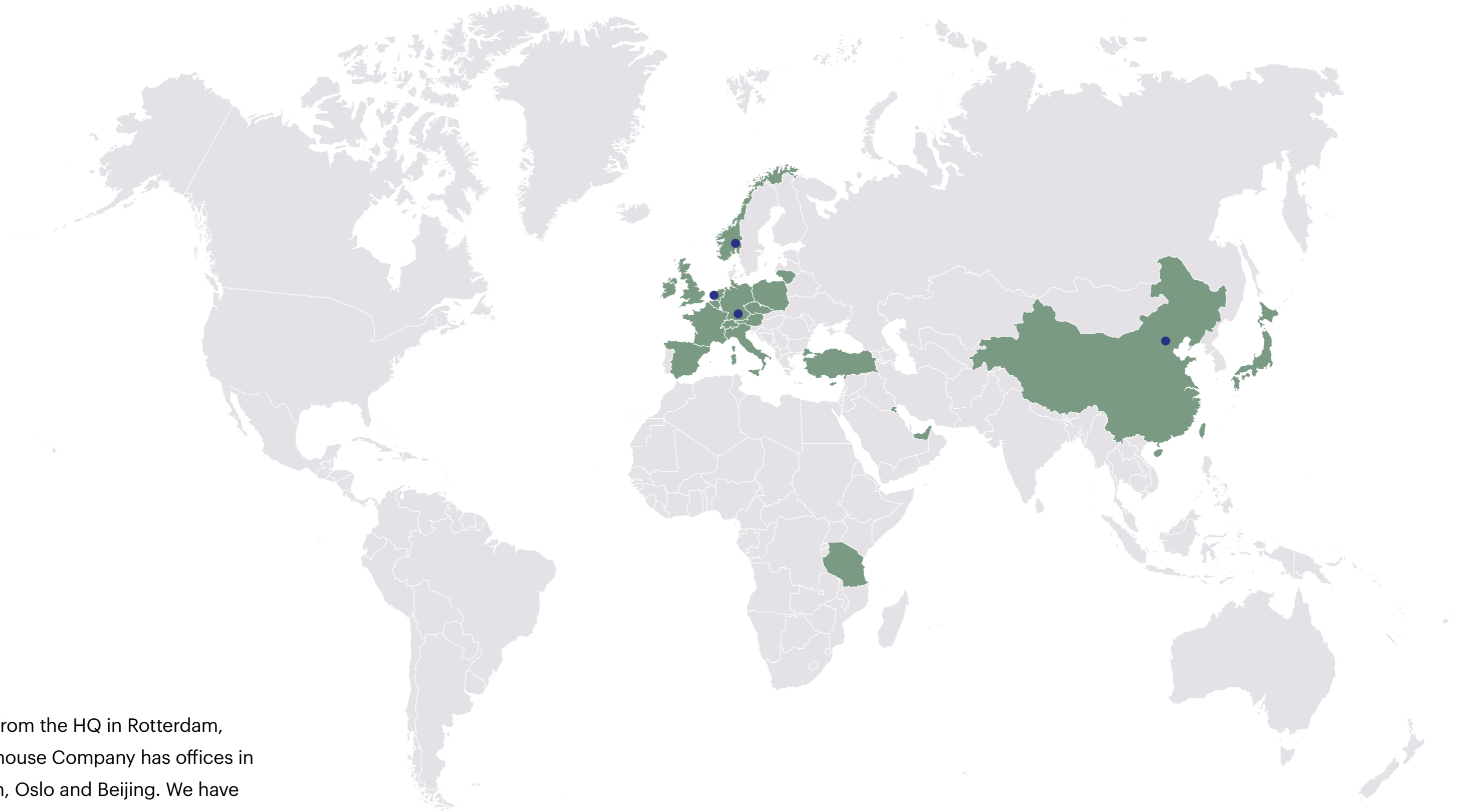
We are Powerhouse Company, an award-winning architecture office based in Rotterdam, the Netherlands. Our story begins in 2005. Newly founded back then, we operated from kitchen tables in Rotterdam and Copenhagen. We have since grown into a multidisciplinary office of around 100 professionals, with international studios in Beijing, Oslo and Munich. Along the way we have won a number of prizes, including the Dutch Design Award, the Maaskant Prize and the World Architecture Festival Award.

Some things don't change however. We are still led by founder Nanne de Ru, these days along with Paul Stavert, Stefan Prins, Albert Takashi Richters, Sander Apperlo (Munich) and Johanne Borthne (Oslo).

We shape our projects through the collective intelligence of our dedicated team, plus our in-depth research into the historical and

future context. We love to be close to our clients, thinking along with them so that we can embrace their social, economic and sustainability goals. Our multi-disciplinary team and collaborative ethos allow us to take full responsibility for any project, from sketch to construction.

We pride ourselves on the sensorial richness of our work, which results from our constant search for the sweet spot between constraints and possibilities. This process enables us to make conscious design decisions that enhance the subconscious design experience. Our approach to function is based on our belief that every inch in and around a building should enrich the overall sensation it creates. This is how we intertwine context, aesthetics and function. The outcome is the serene clarity that people sense in all our projects.



Aside from the HQ in Rotterdam, Powerhouse Company has offices in Munich, Oslo and Beijing. We have worked on projects in many Europe counties, also in main cities in China and the Middle East.



Nanne de Ru

Founder

I founded Powerhouse Company because I wanted to create a team of outstanding professionals – a real powerhouse that would create next-level architecture. I'm proud that we have grown into an international office with the ability to work on an exceptionally wide range of projects, from interiors to train stations and from villas to high rises. We have grown steadily, boosted by the trust that our amazing clients place in our services.

In the office what I find most gratifying is the talent of our incredible people and the wonderful times we have with our clients when we're working together on projects.

The thing I enjoy most about my job is working with our fantastic clients and architects and engineers. The reason I chose this profession is because I wanted to create meaningful spaces, in which the sum of all the component parts add up to more than all the individual elements.

My top prediction for architecture and engineering in the future is that they will continue to be of crucial value for the development of our cities. In particular, inner-city redevelopment projects need architects as team players and visionary leaders.



Paul Stavert

Partner Architect, Rotterdam

Paul Stavert (1980, The Netherlands) is a partner at Powerhouse Company. He is mainly responsible for acquiring and designing developer-initiated projects on inner city locations.

Paul is interested in creating value and architectural quality within the laws of economics that control commercial real estate development. He is responsible for the design development and project management of a large number of projects, including: KJ-Plein, a 50.000 m2 mixed-use project in the city centre of The Hague; the Amstel Tower, with housing and hotel in Amsterdam; District-E, consisting of three high rise towers in the centre of Eindhoven with 80.000m2 of housing.



Stefan Prins

Partner Architect, Rotterdam

Stefan Prins (1981, The Netherlands) is a partner at Powerhouse Company. He is responsible for complex inner city assignments and public projects. Within the office he coordinates several teams specialised in these type of projects and clients. He received his Master of Architecture in 2009 from the Academy of Architecture in Groningen.

Within the office, Stefan is also responsible for the development and implementation of innovative design solutions and BIM processes in the design. During the interactions between client, consultants and designers, he ensures that all interests are analysed and translated into the design.



Albert Takashi

Partner Architect, Rotterdam

Albert Takashi Richters (1985, Netherlands) focuses on concept and vision development at Powerhouse Company, and has a keen interest in design. Having grown up in an international setting, and having lived abroad from a young age, Albert is intuitively inspired by a wide range of subjects and ideas. In 2009, he received both his undergraduate and master's degrees with honours from TU Delft.

Albert is currently coordinating tutor for the Chair of Complex projects at TU Delft and runs the POST--OFFICE platform through which he has organised workshops, small exhibitions and a lecture series. Albert strongly believes in the importance of maintaining an open dialogue of understanding and communication.



Sander Apperlo

Partner Architect, Munich

Sander Apperlo (1987, The Netherlands) is a partner at Powerhouse Company Munich and is managing the practice's German office. In the office he is mainly responsible for the technical design and coordination of high-end international projects.

Sander received his master's degree in Architecture from TU Delft in 2011. He also holds an undergraduate degree in Engineering from the Windesheim University of Applied Sciences in Zwolle, the Netherlands, where he qualified in 2007 and jointly won the award for best graduation project that year. While he was studying, between 2005 and 2011, Sander also worked for several international architecture practices, including Rietveld Architects in New York, USA.



Johanne Borthne

Partner Architect, Oslo

Johanne Borthne (1978, Norway) joined Powerhouse Company as a partner and design director in 2017 and is responsible for the Norwegian branch of the practice.

Johanne holds a master's degree in Architecture from the Institute of Landscape and Urbanism at Oslo School of Architecture and Design, which she graduated from in 2006. Between 2010 and 2017, Johanne was a founding partner of Superunion Architects in Oslo. The office won several international competitions for major schemes in Norway, including a public square in Asker in 2011, a public space project named 'Ruten in Sandnes' in 2012 and the masterplan for Skeiane in Sandnes in 2014. In 2014, Wallpaper magazine named Superunion Architects among the top 20 of the world's best young architecture practices in its directory. The founding partners received one of the most prestigious cultural recognitions in Norway, the Anders Jahre's Prize for Young Artists, in 2014.



Awards

2022

World Architecture Festival
Jakoba Mulderhuis - Shortlisted

2021

MIPIM/Architectural Review Future Project Awards
Floating Office Rotterdam – Finalist
Bunker Tower – Finalist

2020

The International Design & Architecture Award
Penthouse West399 – Shortlist

2019

World Architecture Festival
Amstel Tower – Shortlist
Cannakale Antenna – Commended

2011

Prix Spéciale de l’Ecole Spéciale d’Architecture
Ouvertures – Winner

2011

The Marcus Prize
Nominated

2022

FRAME Large Office of the Year
Floating Office Rotterdam - Winner

2021

Archdaily Building of the Year
Station Assen – Shortlisted Best Public Building

2020

The International Design & Architecture Award
Penthouse West399 – Shortlist

2019

Rotterdam Architectuurprijs
Penthouse West399 – Commended

2010

Chernikov Award
Nominated

2009

Mies van der Rohe Award
Villa 1 – Nominated

2022

Architectenweb Office Building of the Year

2021

Architizer A+ Firm Awards
Finalist in Best of Europe

2020

Frame Awards
Asics EMEA HQ – Shortlist

2013

Mies van de Rohe Award
Villa L – Nominated

2013

Mies van de Rohe Award
Villa L – Nominated

2009

Europe '40 under '40
Winner

2021

Drentse Architectuurprijs
Assen Station – Winner

2021

AZ Awards
Villa JM – Residential, Single Family – Finalist
(awaiting outcome)

2020

Architizer A+ Awards
Asics EMEA HQ – Shortlist

2012

Nykredit Motivation Prize
Winner

2010

Nationale Staalprijs
Erasmus Paviljoen – Nominated

2008

Prix Spéciale de l’Ecole Spéciale d’Architecture
Winner

2021

Prix Versailles
Assen Station – Nominated

2021

The Royal Institute of Dutch Architects (BNA)
Best Building of the Year
Assen Station – Winner People’s choice Award

2020

MIPIM/Architectural Review Future Project Awards
Canakkale Antenna – Commended

2011

Mies van der Rohe Award
Spiral House – Nominated

2010

Mies van der Rohe Award
Spiral House – Nominated

2008

AM/NAI Award
Best Building by Architect Under 40 – Winner

2021

World Architecture Festival
Floating Office Rotterdam – Shortlist
The Loop of Wisdom – Shortlist
The Traveller – Shortlist

2020

AR House Awards
Penthouse West399 – Longlist
Villa B – Longlist

2020

Awards
Website of the Month April 2020 – Winner

2011

Rotterdam Maaskantprijs
Winner

2010

ECOLA
Spiral House – Nominated

2008

Dutch Design Awards
Villa L – Winner

Typology

Floating Buildings

Floating Office Rotterdam (FOR)

A Vessel for Change

Moored at Rijnhaven port in Rotterdam, our floating office for the Global Center on Adaptation is a building for a new age. Off grid and carbon-neutral, it will float – rather than flood – if water levels rise due to climate change. Fun as well as functional, it also forms a key element in a newly redeveloped port environment by providing public waterside space – and even a swimming pool.

Client

RED Company

Location

Rotterdam, The Netherlands

Size

3 700 m²

Status

Under construction

Typology

Office, Public space

Period

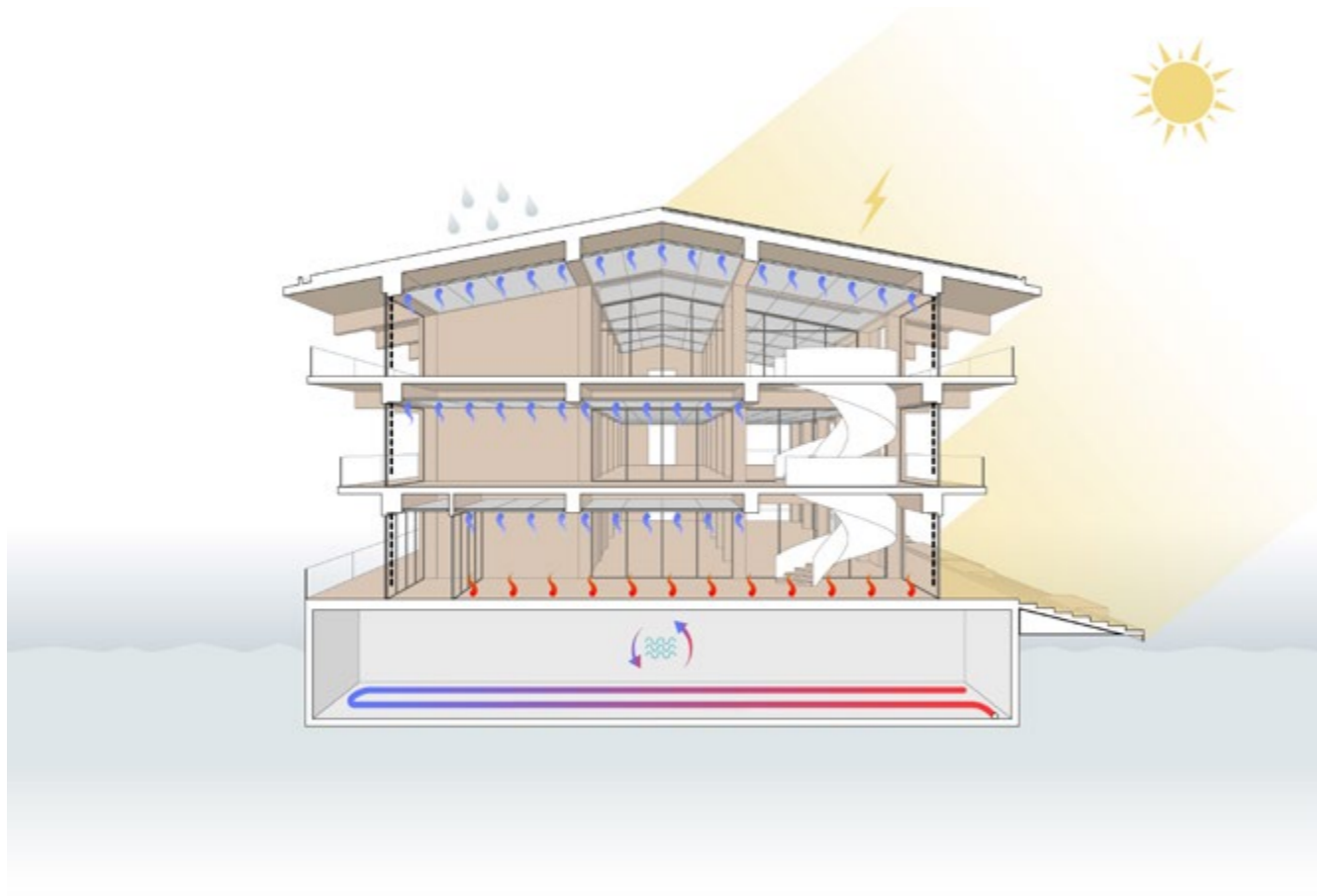
2019 – 2020

Partner in Charge

Nanne de Ru





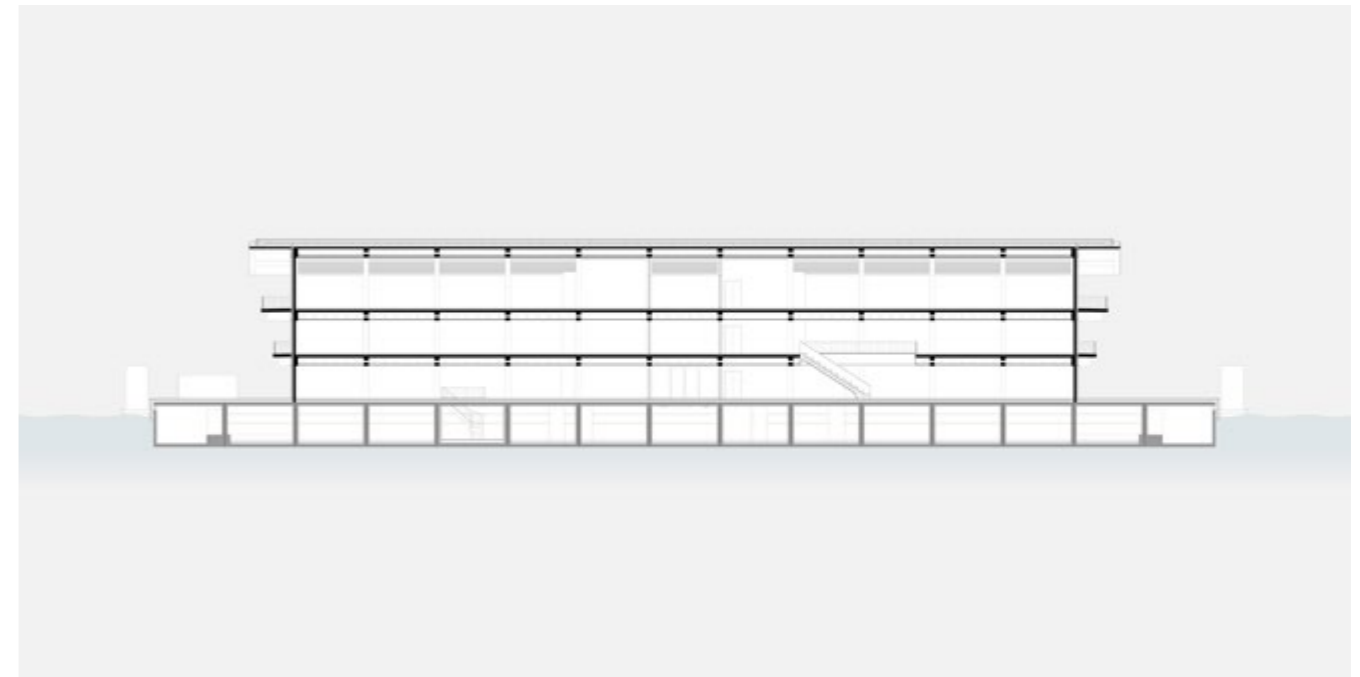


The planted roof utilises rain water to sustain the greenery and offers an ecological advantage to the construction.

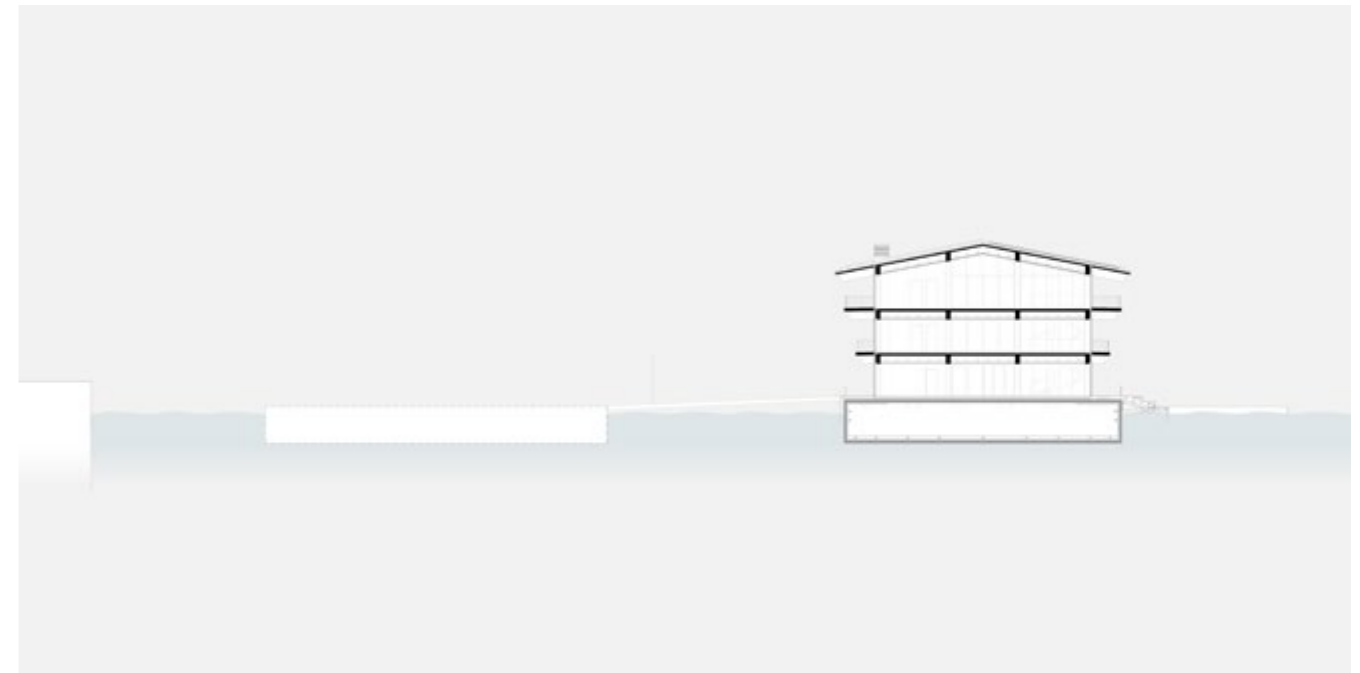
Large floor-to-ceiling triple glazing windows offer wonderful views while a system of interior movable shading with reflective material prevents overheating during warm days.

The cooling of the building is feasible through heat exchange with the canal waters, while the electricity used in the building is provided by almost South side of the roof, which is covered in PV panels.

Section A-A



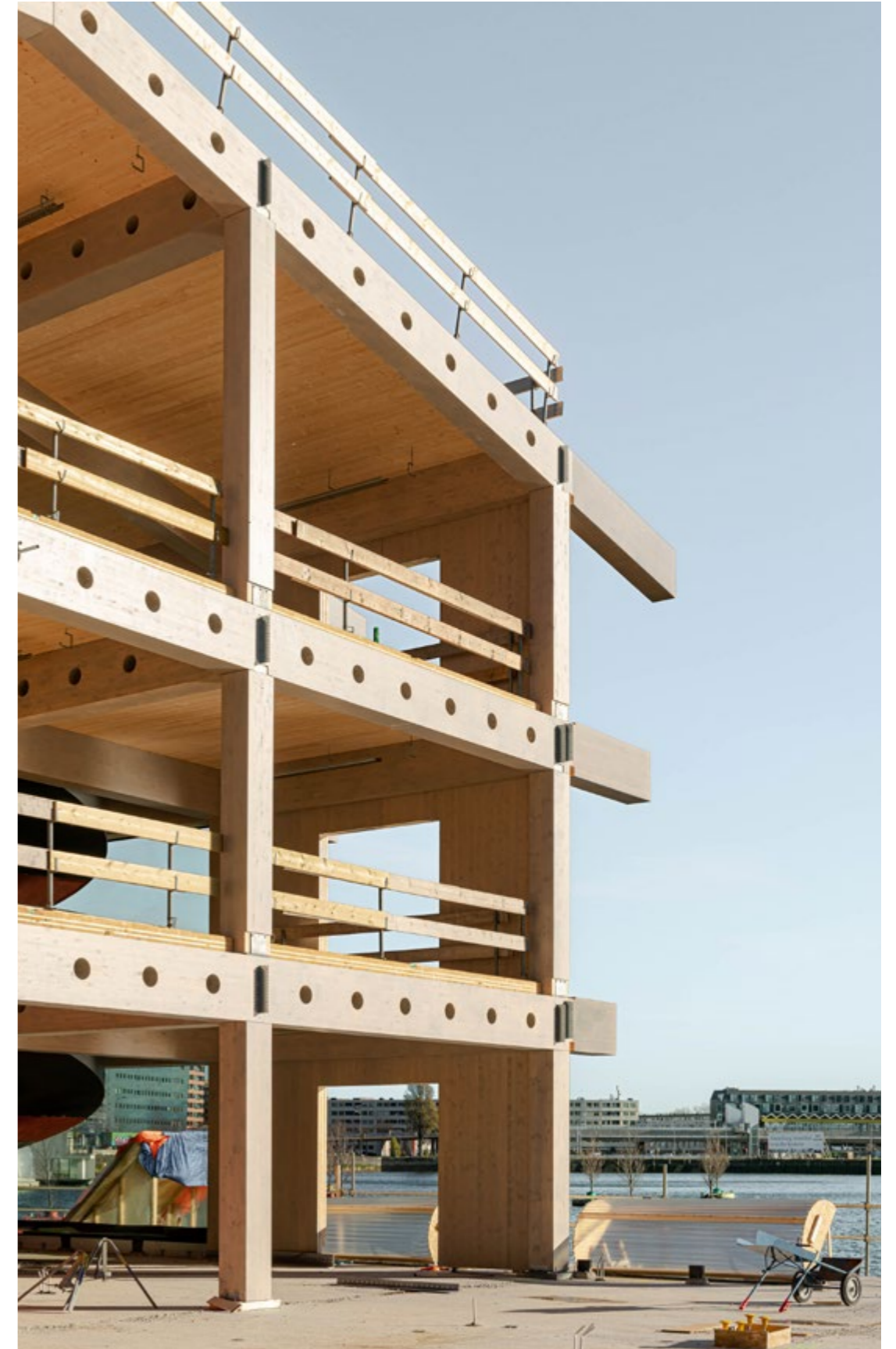
Section B-B

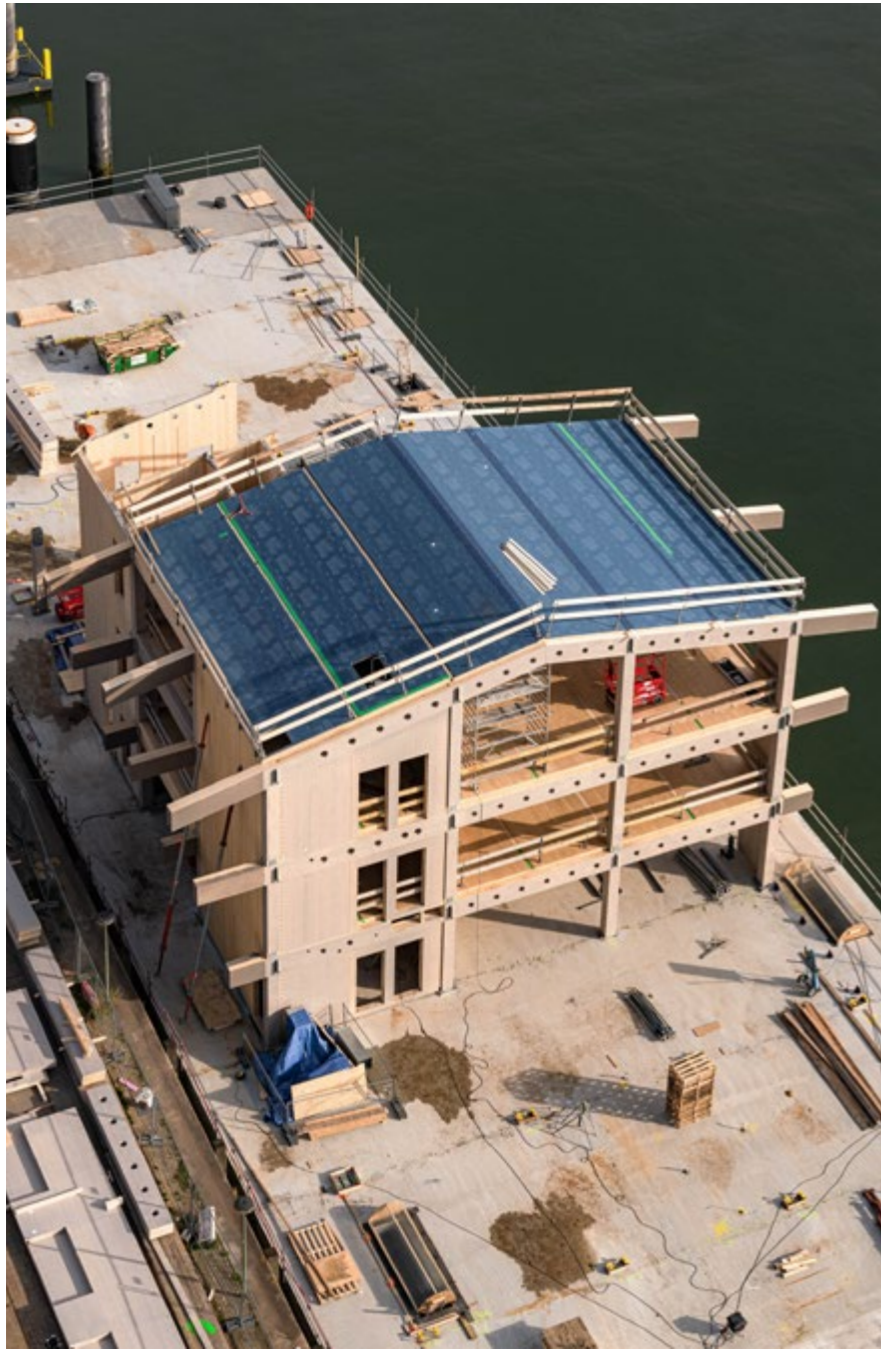




The huge floating structure, measuring 90 by 24 meters, arrived at its permanent berth in Rotterdam's Rijnhaven harbor, having been towed there all the way from Zaandam, over 80 kilometers away.

FOR being assembled



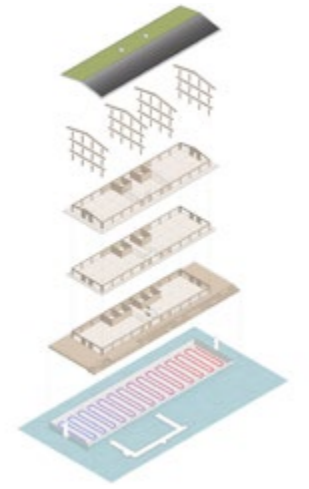
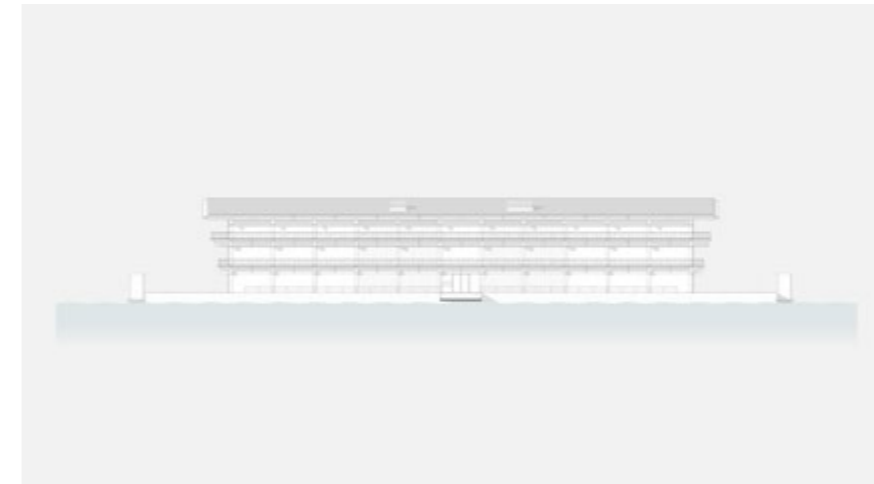


FOR under construction

FOR the future

We designed our floating office to reflect the values of its inhabitants: the Global Center on Adaptation. This Rotterdam NGO aims at promoting planning, investment and technology to mitigate climate change. Our climate-resilient office is therefore both an illustration of the centre's mission and an inspiration for others. With its own solar energy source and water-based heat-exchange

system, it's completely self-sufficient. Built entirely of timber, to minimize its carbon footprint, our building has three stories and is accessed via a boardwalk. Overhanging balconies around each floor plus a pitched roof provide shade. FOR also features public facilities: a restaurant with a large outdoor terrace and a swimming pool.



'Designing a sustainable, floating office building was a challenging commission and we approached it holistically.'



Nanne de Ru
Founding Partner



Offices with daylight and views

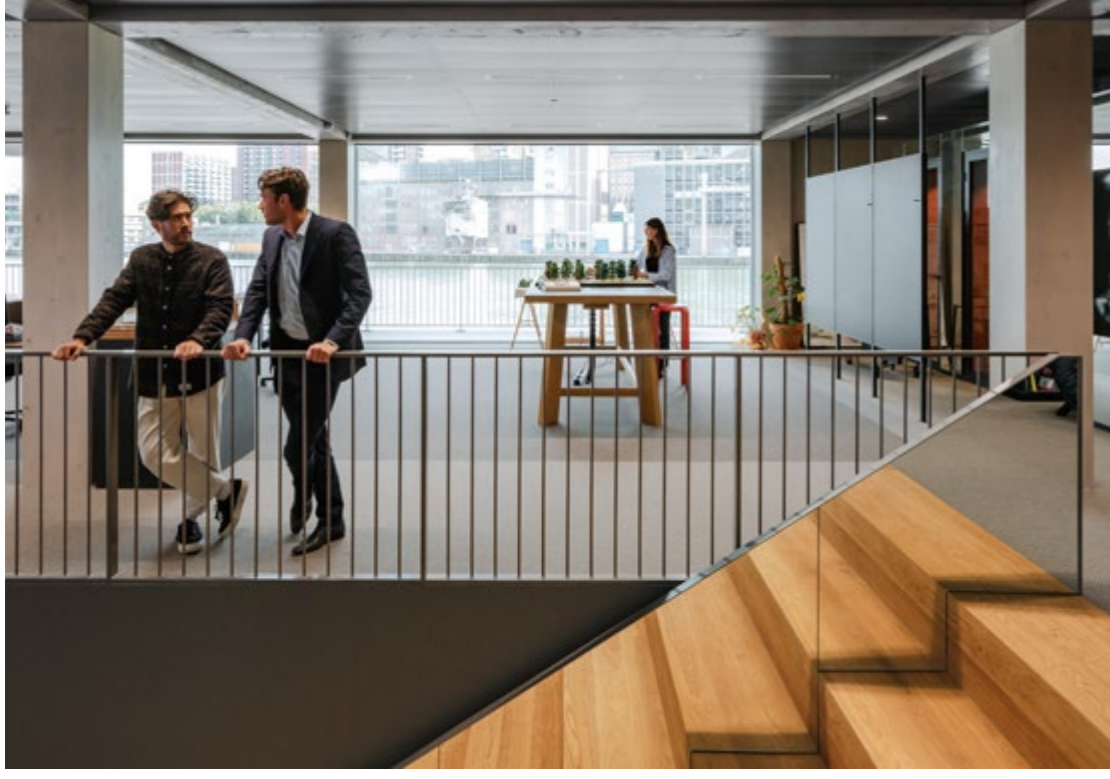


Terraces around FOR



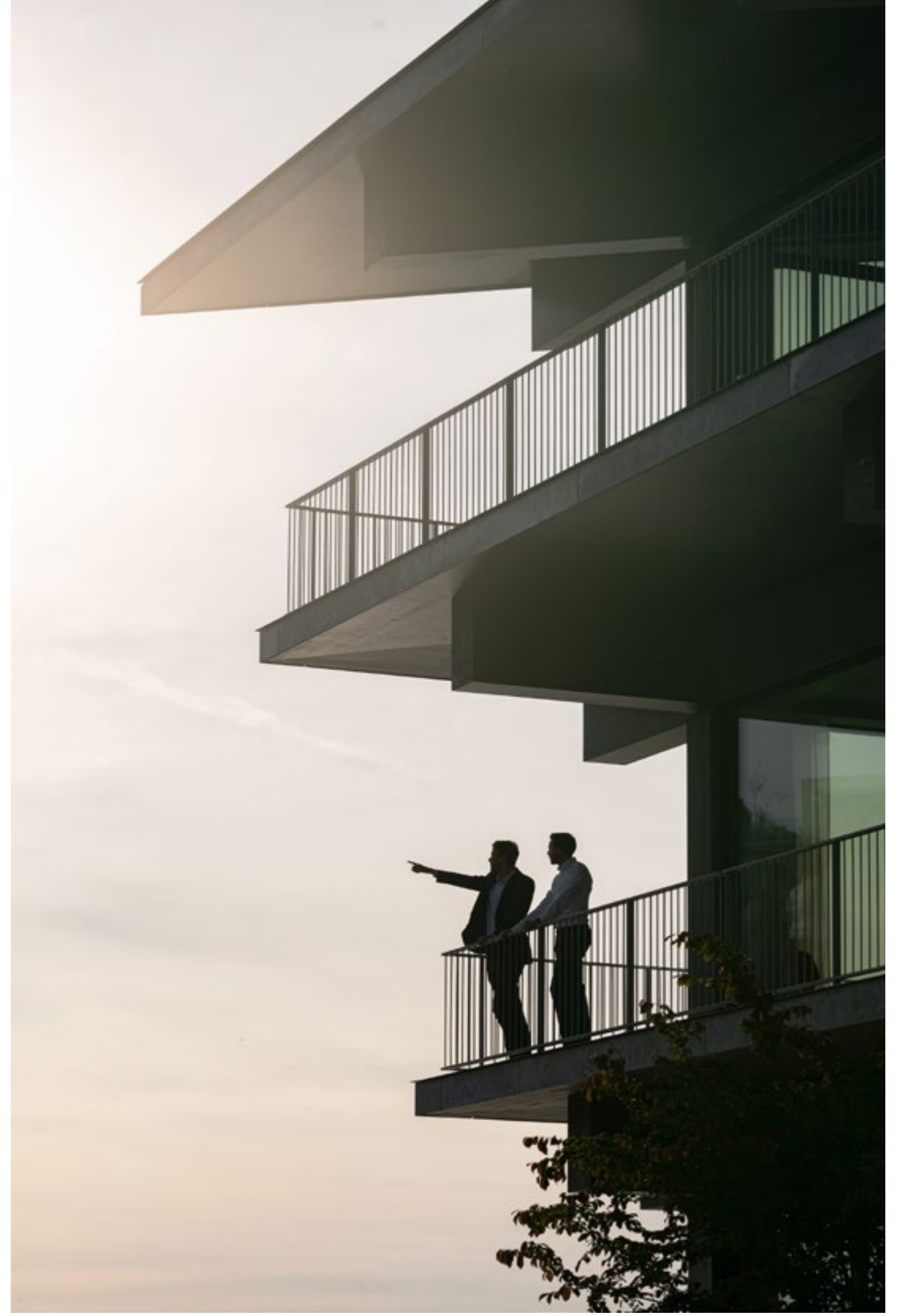


Meeting rooms with art



A flexible space in a 6x6 meters grid

Balconies on the Rijnhaven





View of the lunch area from outside







On Solid Waters

In our design, we represent ViaDonau with a structure that has a trust-ed yet elegant presence on the water. It answers to the highest standards in sustainability and is flexible enough to adapt to the future needs and shifts of an office workplace. We have devised a scheme in which different volumes work together to form an ensemble of buildings, though bound by the given of two barges as the main foundation. The different volumes liberate space for a variety of spacious garden-like terraces accessible to its users or visitors of this new ViaDonau Home-base. With its strong yet friendly presence, the Danube can be de-scribed as a monolithic openness. We kept the office functions more solid, with friendly spaces in between that are welcoming, and more intimate.

Client

Viadonau

Location

Vienna, Austria

Size

3 300 m²

Status

Competition finalist

Typology

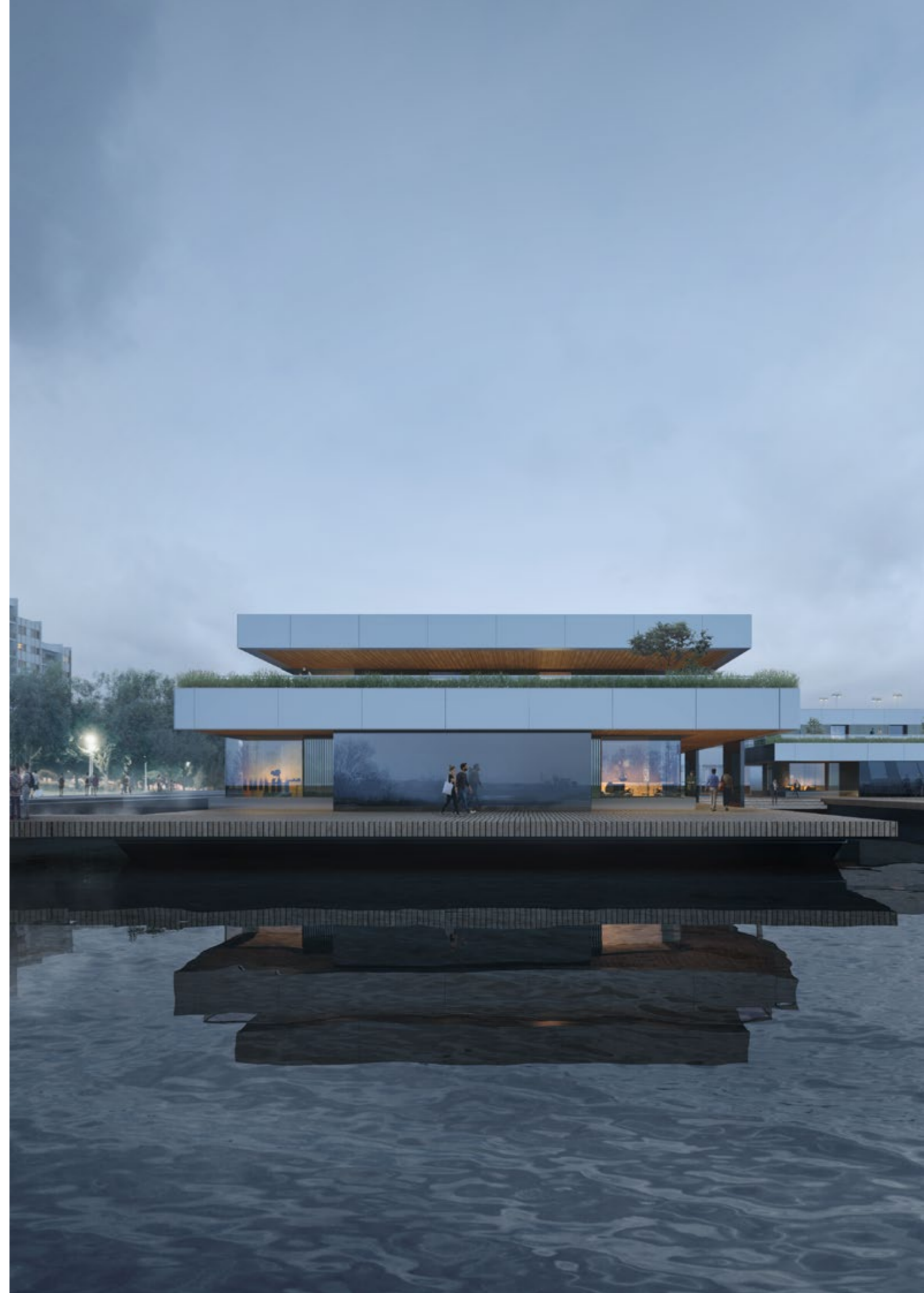
Office

Period

2020

Partner in Charge

Sander Apperlo



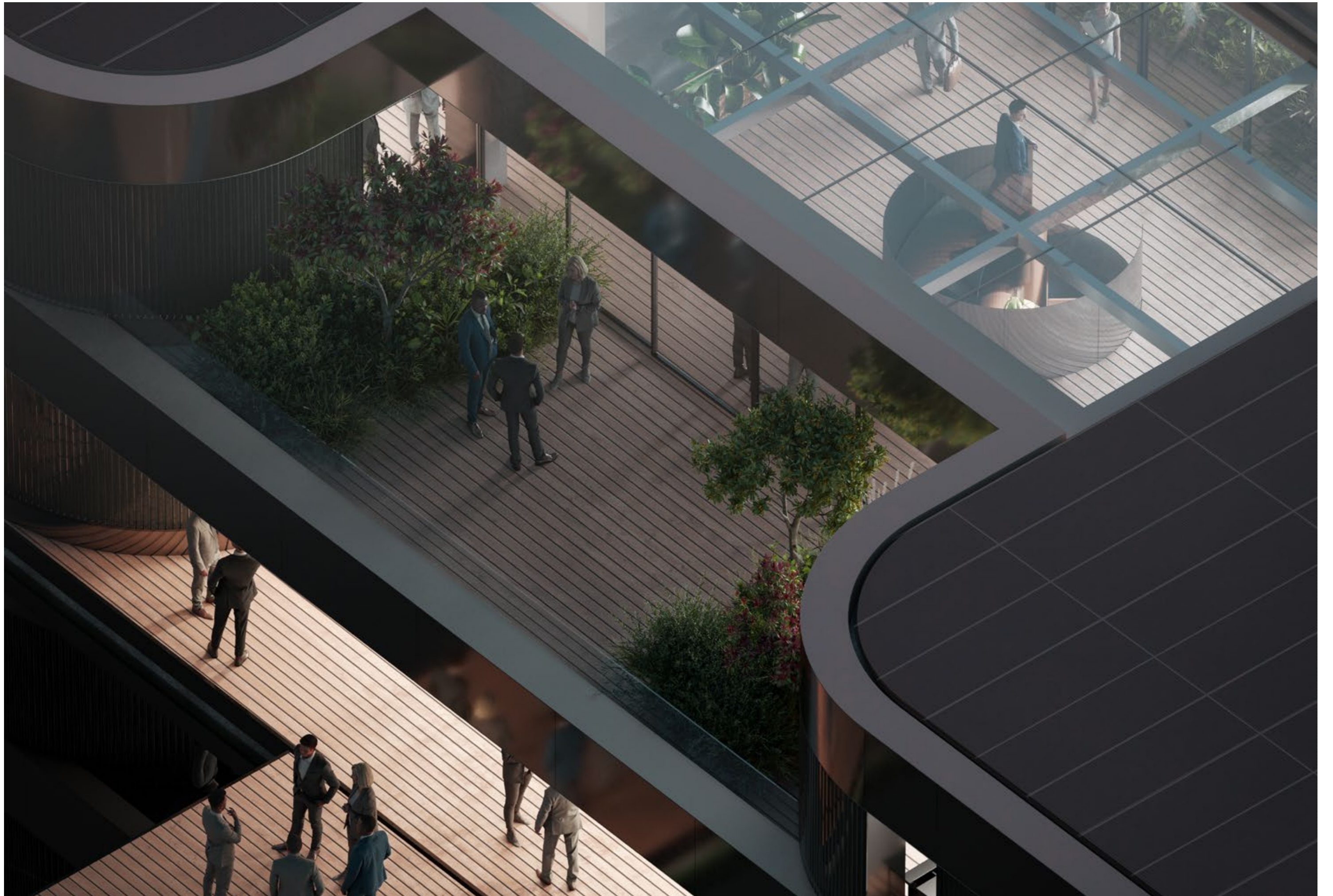




Within the context, we understand the great importance of ViaDonau to maintain and innovate the beautiful parts of the Austrian and European landscape. Rated as one of the most liveable cities in the world, Vienna prides itself with a rich legacy of urban planning in which grand cultural monuments, public spaces, social housing, and infrastructure form a balanced and varied urban tissue that nowadays has led to a dynamic, future-oriented yet authentic city. This is the result of a Vienna that over the years has

been built on itself layer by layer, combining urban-ism, architecture, and engineering to cater to its shifting needs. The Danube has been the stage of shifts and important engineering projects throughout the centuries. The Danube itself has literally shifted to manage the water and liberate Vienna's swamplands for further expansion. At the same time, it has always been one of the most important transportation routes in the European continent.





Hotels

M37 Hotel

Ode to Oslo

In line with the ambitions of Oslo's new Government Quarter, our new hotel replaces an inward-looking 1930s building with an effortlessly extrovert design. While we embrace the future – in the form of a new green park and pedestrianized streets – we also honor the history of Oslo. Our design channels the area's architectural heritage and political ideals: a Madmen aesthetic meets social democracy in this fresh take on Nordic Modern.

Client

MWPO

Location

Oslo, Norway

Size

5 100 m²

Status

Completed

Typology

Hotel, Living, Public space

Period

2021 – ongoing

Partner in Charge

Johanne Borthne





A Modern Archetype

We took our design cues from the area's Modernist heyday: the 1930s until the 1960s. Following the rational and progressive architecture of the time, we channeled a kind of Madmen esthetic, whilst maintaining a down-to-earth simplicity in line with Norway's model of social democracy. Creating a new presence on the street, we added a double height ground floor with mezzanine and bar. Its transparency opens up the building to all the surrounding attractions – shopping, culture, and, of course, the new park.





Accra Hotel

A New Eye-Catcher in James Town

Near Kotoka Airport and the Accra Mall, the new hotel is ideally located. Including amenities such as a pool, restaurant, baby day care, and a tennis court, it is a place to come together, relax, and explore. Connected to the vibrance of the city, the hotel building offers the best sea views and authentic experiences for the urban traveller.

Client

Confidential

Location

Accra, Ghana

Size

8 500 m²

Status

On hold

Typology

Hospitality, Offices, Interiors

Period

2022 – ongoing

Partner in Charge

Nanne de Ru







Embedded within the existing structures, the hotel creates a sequence of outdoor spaces. Starting from the lobby, one gets a direct visual to the beach because of the open lay out

We use textiles as a direct reference to the typical fishing activities from Jamestown and the traditional Kente fabric. We introduce it in an elegant and attractive way that immediately catches one's attention. This is the element that ties the entire interior together.

Arrive in a serene patio, walk through a colorful atrium, and enjoy the sea views. We combine these ideas with an efficient floorplan to accommodate a large number of hotel rooms to make use of all the space.





Amstel Tower

Softening the City

Our first-completed tower has an unexpected appearance. Slender and curvaceous, with flowing lines, our new building softens the urban landscape with its sinuous contours and a vibrant mixed-use space. It also beautifully echoes the stylish 1930s station building located next door, and plays a defining role in the radical redevelopment of this up-and-coming Amsterdam area.

Client
Provast

Location
Amsterdam, The Netherlands

Size
27 000 m²

Status
Completed

Typology
Hotel, Living, Public space

Period
2013 – 2019

Partner in Charge
Nanne de Ru, Paul Stavert

Awards
WAF 2019 nominee







A station city

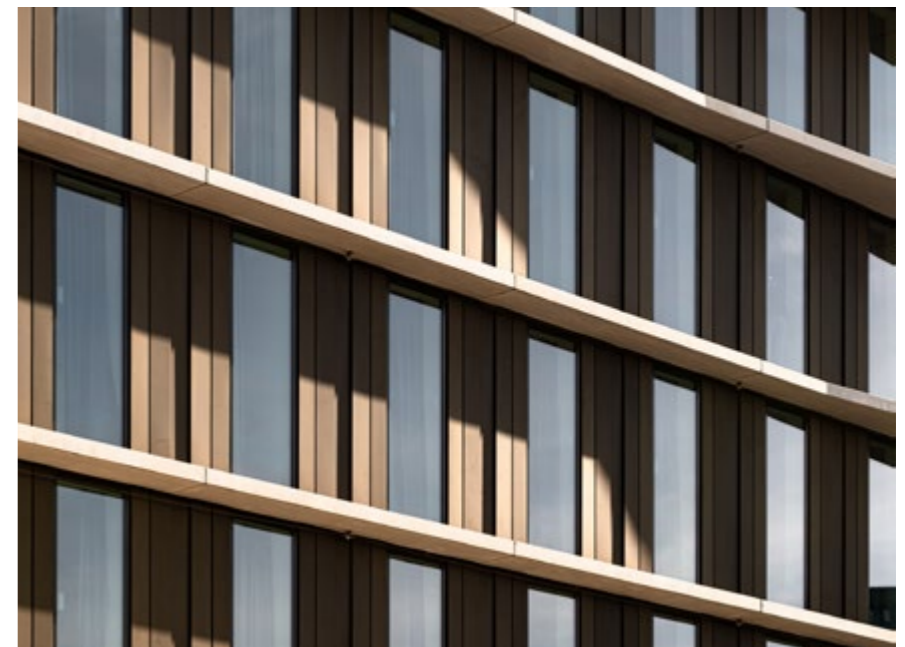
Amstel Station, Amsterdam's second-busiest transport hub, is currently undergoing a major infrastructure upgrade. We wanted to contribute something special to the station area's new identity, and our dynamic tower is the result. Tailored to fit the site and the needs of the neighborhood, our Amstel Tower combines 200 apartments in an elegant 24-story residential tower with a mid-rise base for an international hotel. A ground level with parking and retail functions adds liveliness to the area, while the tower provides the city with a new landmark. The fluid contours of our building were inspired by the rounded canopy of the Amstel Station building, designed in the 1930s by H. G. J. Schelling. We took the canopy and transformed it into a full-perimeter feature by extending the floor slabs into balconies around the tower and its base. As well as providing a strong (yet soft!) visual identity, these extended slabs provide outdoor space, shade and noise insulation for the apartments. With the vertical elements of our facade, we also repeat the rhythm of Schelling's beautiful full-glass facade for the main station hall.



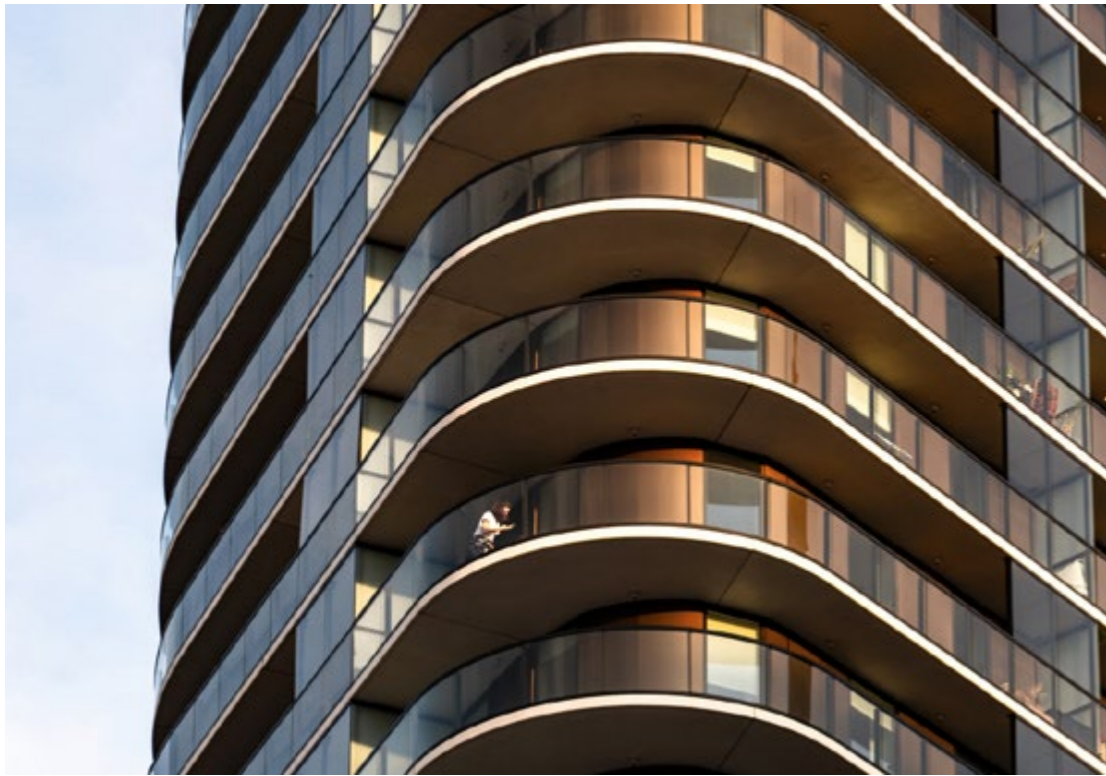
Relationship tower and station



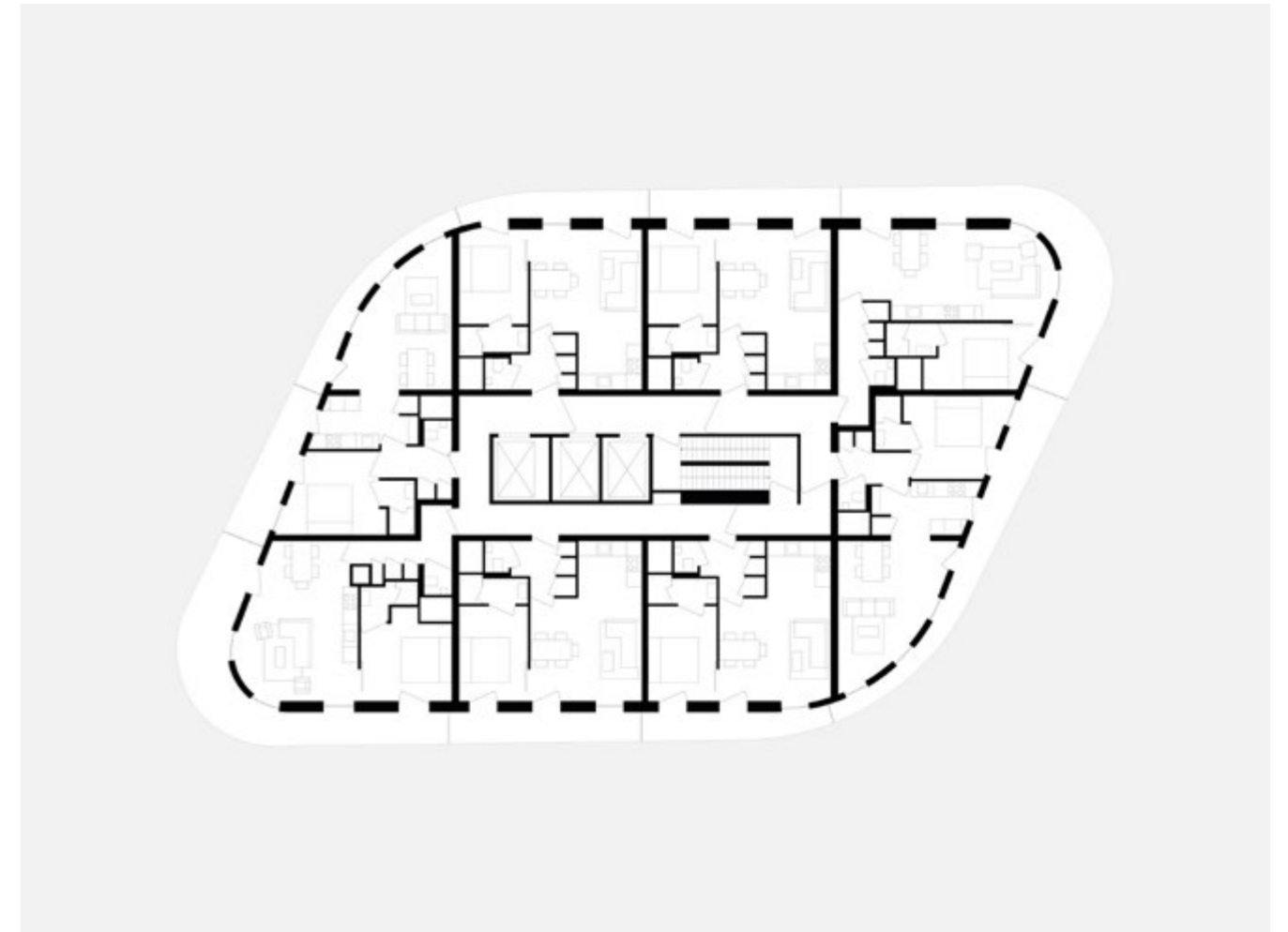
Cantilevers



Detail facade



Here the thicker walls on two sides and the core indicate the direction of the tunnel-form construction system we used. The curvilinear form allowed us to add an unusual level of architectural quality, with expansive views and generous balconies.



Typology

Luxury Living

Villa B

Modern Monument

Magnificently monolithic at first sight, our Villa B is a house with an intriguing double identity. Behind the imposing, screen-like frontage is a warm and welcoming domestic space that gradually opens up the house to the garden, bringing the outside inside with a transparent rear facade. Our composition in contrasts meets our clients' wishes for a distinctive home that would be a new take on the classic Munich townhouse.

Client
Confidential

Location
Munich, Germany

Size
2 500 m²

Status
Completed

Typology
Villa, Interior

Period
2012 – 2017

Partner in Charge
Sander Apperlo

Awards
WAF Award 2019







We make an entrance

Villa B has a majestic presence. We took an impressive volume and structured it in vertical slabs of marble with fine brass lining. We made the facade entirely closed, except for the solid patinated brass entrance doors and four marble panels on the first floor that open to reveal a window. We kept the detailing of the facade extremely clear in its lines and expression, eliminating any element that suggests mechanical or technical movement, such as hinges and sliders.



Embracing the garden

'The solid exterior of the house gradually opens up toward the garden.'



Sander Apperlo
Partner Architect, Munich

Our wider, wilder view

Our closed front facade acts as a privacy screen for the interior and garden. Embracing the green space outdoors, we opened up our design towards the back of the house, progressively increasing the number of glass openings. These culminate in our entirely transparent garden facade.

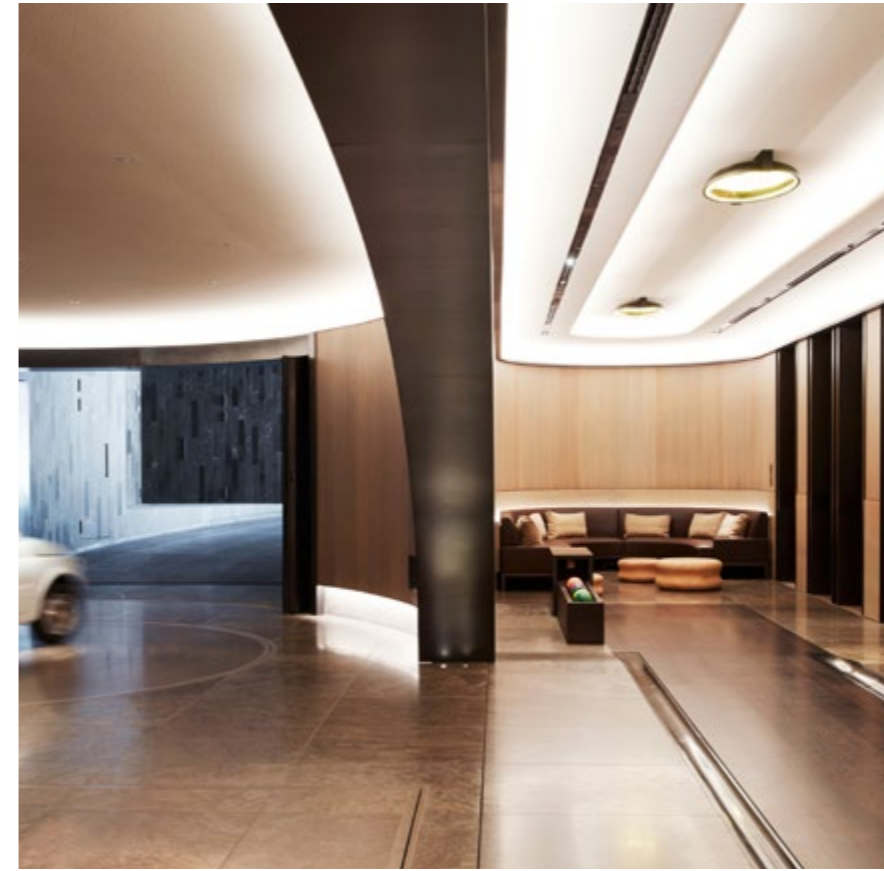
Interrupted only by narrow stone bands forming large overhangs, our glass wall ensures a seamless transition between the interior and the lush natural landscape outside.

Natural materials, natural setting





Warm wooden staircase



Wooden bowling alley

In the basement, our garage uses unconventional materials: wooden walls and a natural marble floor. The curvilinear walls of our space make it dynamic and impressive, and set it apart from the rectilinear house.

It wasn't our idea to add the expensive cars as a finishing touch, but we find them very much a part of the atmosphere. They fit into the integrated idea of beauty and design in Villa B, in which every detail is considered.





Formed by bands of chalcedony of different hues, green onyx has been used in architecture since Egyptian times. We use it to create the stunningly sculptural bathroom of Villa B, channelling an almost archaeological atmosphere. We love green onyx for its rich tones and soft transparency.

'In Villa B, customization is at the heart of both the interior and exterior. It makes the whole house a totally one-off object, a Gesamtkunstwerk.'



Sander Apperlo
Partner Architect, München

We love Bronze Amani for its rich, earthy colour, threaded with distinctive yet subtle white veins. Also known as Gris Pulpis, it's quarried near the town of Santa Magdalena de Pulpis in Spain. The bronze colour results from the presence of serpentine minerals and gives the stone its unusually warm character.



Villa JM

Long and Lovely

Based on an elongated U-shaped floorplan, our Villa JM presents a secretive stone face to the world, revealing only a tantalizing glimpse of its inner world in the shape of its central courtyard.

Client

Confidential

Location

The Netherlands

Size

407 m²

Status

Completed

Typology

Villa, Interiors

Period

2018 - 2020

Partner in Charge

Stijn Kemper

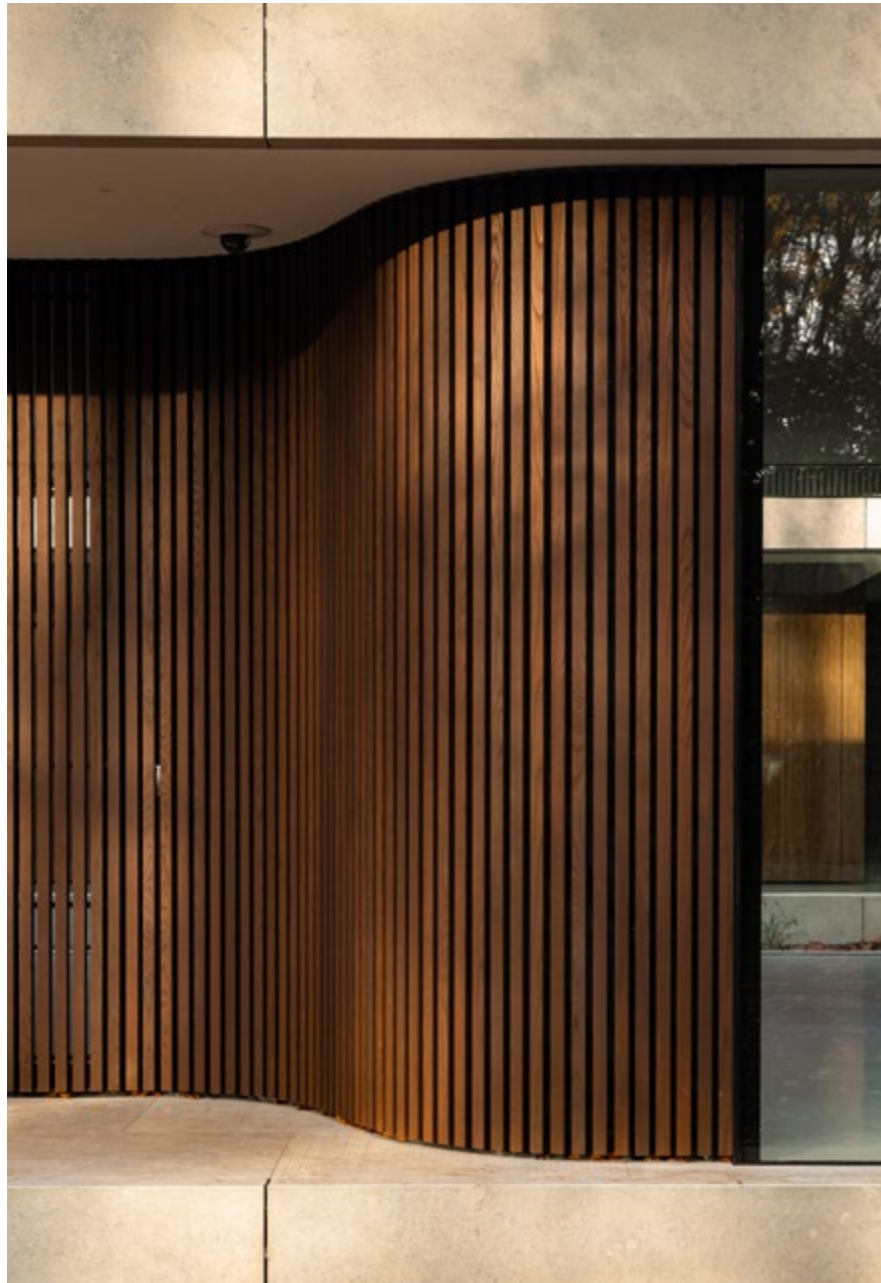




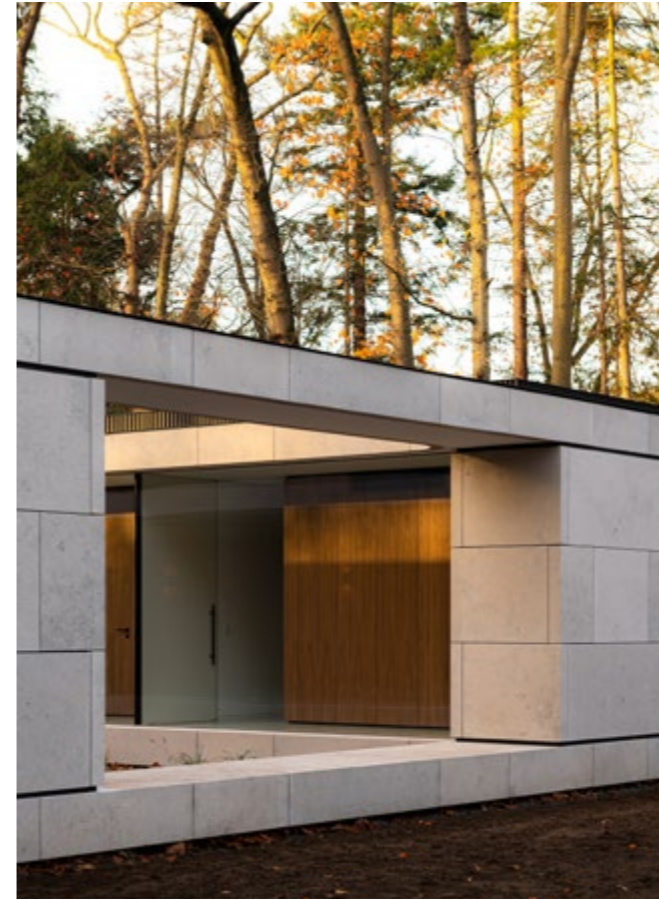
Woodland Retreat

Inspired by the location, an extensive wooded site in the south of the Netherlands, we discreetly positioned expanses of glass to offer our clients the best of the natural views, while closed volumes safeguard their privacy. Natural stone and wood add depth to our elementary one-story design, which pairs sober straight lines and monumental volumes with seductive curves and sinuous glass walls.

From the road, Villa JM is a closed stone rectangle, pierced only by one large opening. This monumental opening reveals its inner courtyard garden, giving a hint of the warm interior. By raising the entire building, including all terraces, some 40cm above ground level, we add to its monumentality and presence in the landscape, while providing the villa with several integrated terraces. The glass-walled courtyard garden translates the surrounding landscape into a domestic context.



Curved wooden wall detail



The courtyard entrance to the villa



Curved walls in richly colored ash



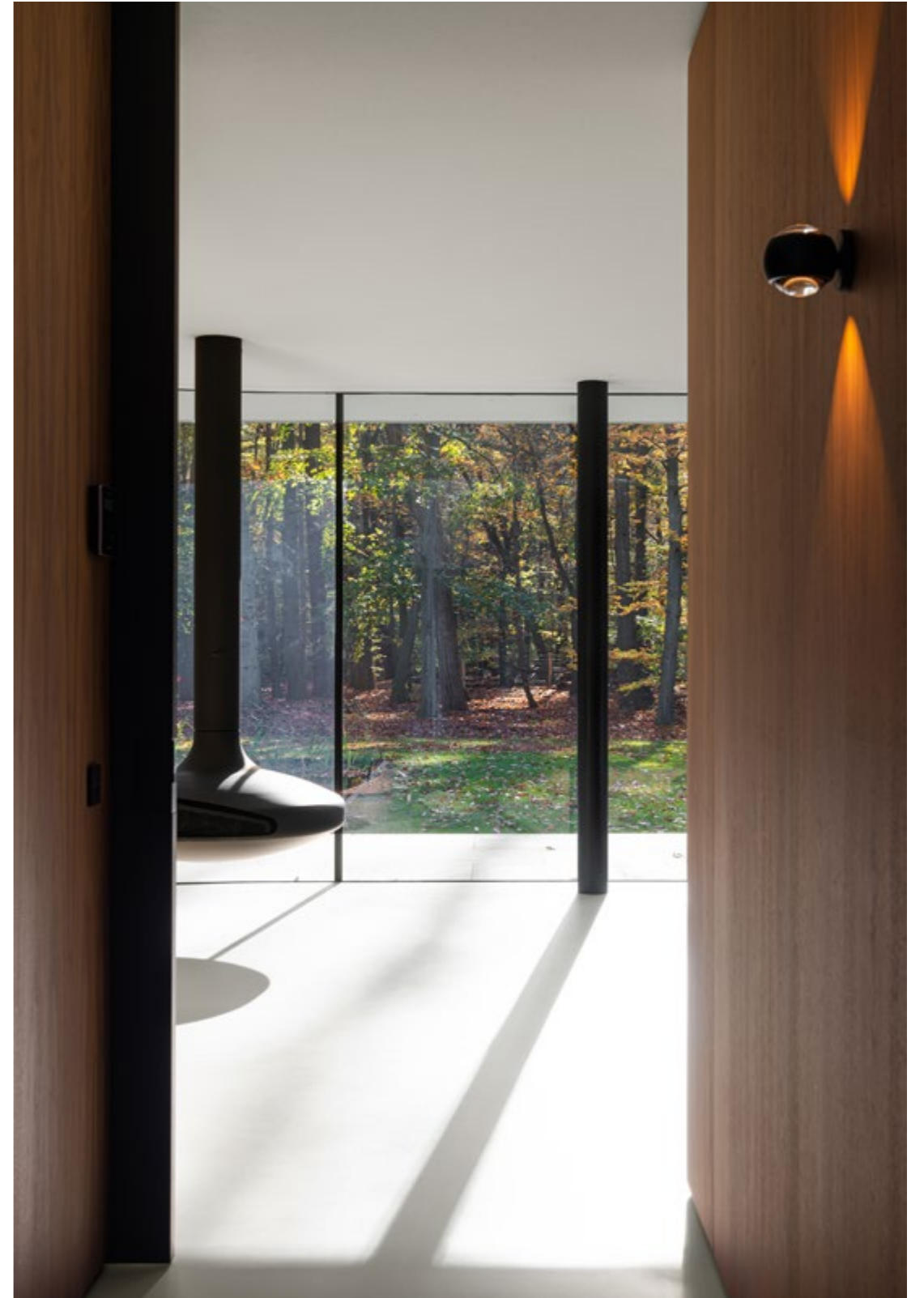


The ethereal-looking glass wall frames woodland views



The small annex is beautifully camouflaged in the trees

View into the living room with glass wall



On Top of the World

We converted a neglected 1968 office building into stylish apartments – creating our own dream home in the process by adding a glass-box penthouse to the roof, framing the superb views of Rotterdam’s skyline. While it’s a real feat of contemporary engineering – as the largest load-bearing glass façade in north-western Europe – our glass intervention was inspired by America’s Midcentury Modern architecture: a transatlantic complement to the European Modernist structure it stands on.

Client

Nanne de Ru and Nolly Vos

Location

Rotterdam, The Netherlands

Size

450 m²

Status

Completed

Typology

Villa, Interior

Period

2016 – 2019

Partner in Charge

Nanne de Ru

Awards

Honourable mention RAP19





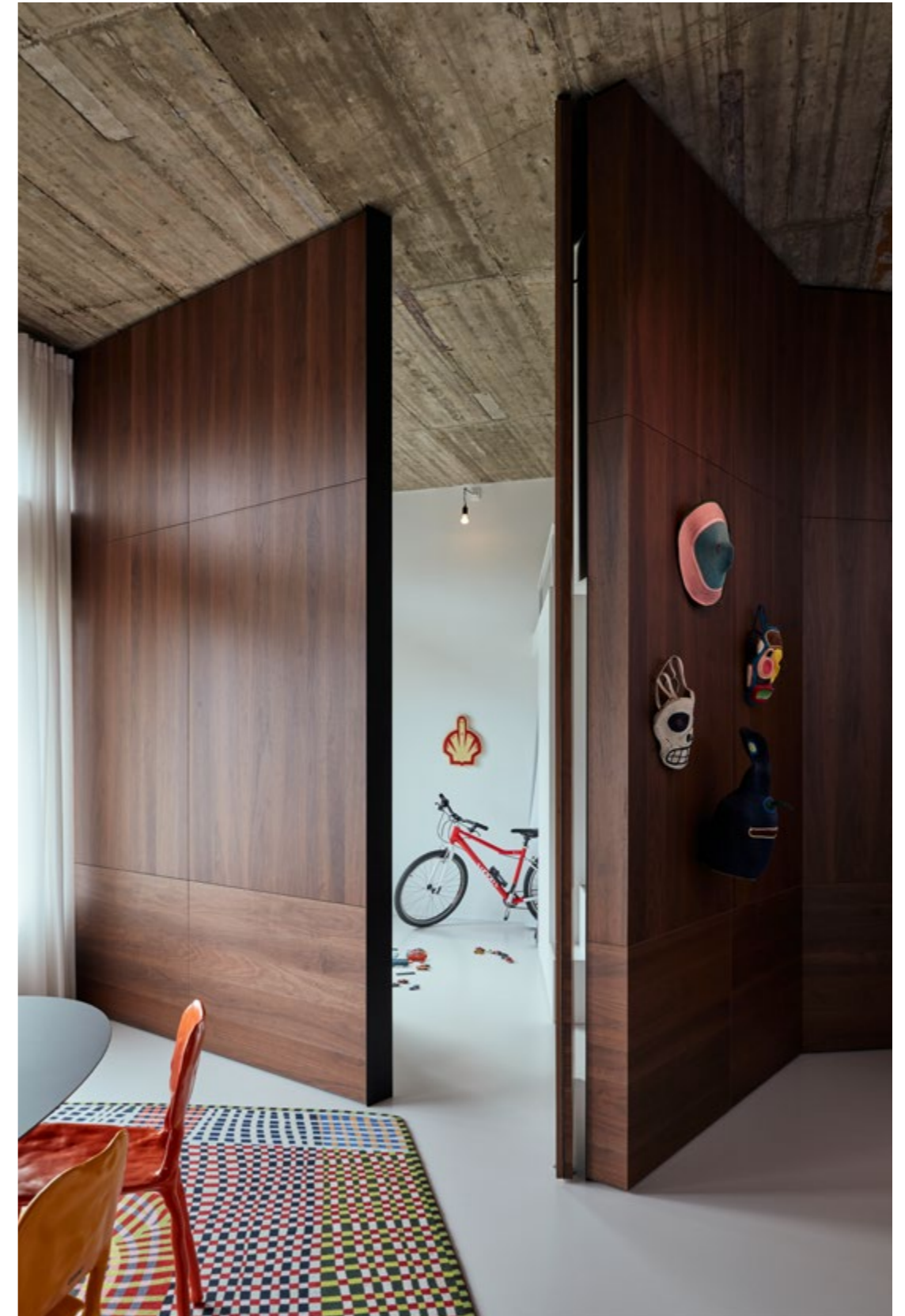


Béton Brut

The height of nearly 12 feet béton brut – the raw, concrete ceiling characterizes the 4th floor. Rooms on this level root in the existing building structure, creates integrated experiences of space and are clad in American walnut veneer, an appreciated material with a Modernist heritage. The design respects the original architecture

of the building with the choice of materials throughout, as we wanted to incorporate the ones as often used in Rotterdam’s post-war period architecture. Our signature spiral staircase connects the top floor with the newly created penthouse, where modern and refined travertine is used instead of the raw concrete.

Wooden walls make the kids bedroom







The kitchen





Travertine bathroom





Baan Tower

Living the Dream

In the heart of Rotterdam, our dramatically different black marble residential tower captures the excitement of metropolitan living. With its mix of iconic architecture, breathtaking urban views and an innovative lifestyle concept based on luxury and well-being, it's a recipe for the perfect city life.

Client

RED Company

Location

Rotterdam, NL

Size

25 000 m²

Status

Ongoing

Typology

Residential
Hospitality

Period

2015 – ongoing

Partner in Charge

Stefan Prins







Eyeline to Skyline

On the ground and from a distance, the Baan Tower plays a pivotal role in the remodeled Baan Quarter neighborhood. On the street level it presents a rich range of experiences for inhabitants and passers-by, from the transparent, open entrance with its beautiful lobby on show, to the soaring cantilever that forms a corridor through the building with a spectacular 25m-tall gateway. On the skyline, it forms a dynamic ensemble with the new CoolTower and DWNTWN residential buildings, giving the Baan Quarter an instantly recognizable silhouette. At 160m high, in black marble with a luminous crown, it can hold its own against the surrounding high-rise development – which is framed in fabulous urban views from the Baan Tower’s huge windows.



Black and Gold

On the ground floor, our open facade reveals a dark and smooth double-height interior. Black Nero Portoro marble floors and walls are offset by a golden ceiling painted with a cloudscape in gold leaf. Linear LED lighting adds to the golden glow. This heady mix is used for the elevator hall as well as

the hotel-style lobby, which forms the welcoming entrance to the building and houses the concierge desk. Next to the lobby, the café continues the hotel-style experience, with its white marble bar and huge windows offering lively views of the street.



Windows on the City

The Baan tower contains 427 apartments ranging from compact studios to family homes and penthouses. Uniquely for this location, all the apartments are rental. Each of the homes in our tower offers amazing views thanks to windows that measure 2.3m x 2.3m. These are framed in champagne-colored anodized aluminum, with the frames incorporating the ventilation

elements. Well-organized layouts give every apartment the feel of a contemporary loft, and top-quality materials add style and luxury. Structurally, placing load-bearing columns in the facade and creating a central concrete core ensures that the building is highly flexible: in the future, the apartment layouts can be adapted, reflecting changing needs.

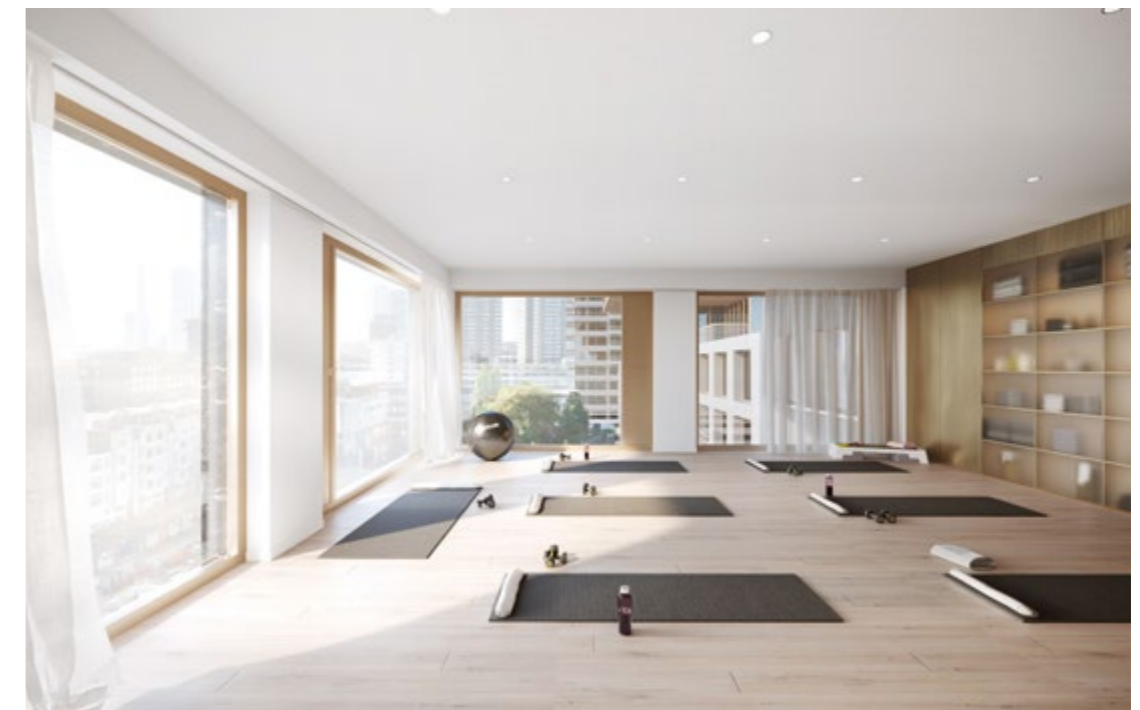




Hotel Experiences at Home

Our Baan Tower offers residents much more than just an apartment. It's an all-round experience of life in the city, uniting a great location, just around the corner from the lively Witte de Withstraat, with onsite amenities more typical of a luxury hotel than a home. As well as enjoying the rooftop pool

and terrace, residents can indulge in a yoga class in the gym, go for a sauna or take a stroll in the green rooftop park. They can book a workspace in the library, reserve the living room for a party, or a guest apartment for a visit from friends or family – all these options and more, under a single roof.



Typology

Public Space

Assen Station

Gateway to the City

Assen Station has been completely transformed thanks to an extraordinary wooden structure. The new station is defined by a triangular wooden roof that appears to float above the several buildings below. It connects the railway line and the city with one single urban gesture.

Client

Nederlandse Spoorwegen,
ProRail,
Assen Municipality

Location

Assen, The Netherlands

Size

3 015 m²

Architects

Powerhouse Company,
De Zwarte Hond

Status

Completed

Typology

Public space

Period

2014 - 2020

Partner in Charge

Stefan Prins







The eternal triangle

Assen Station was originally a transit station where the city remained invisible to travellers. The municipality of Assen therefore asked for a transparent and inviting station on the regional level, which would at the same time remove the barrier of the tracks on the neighbourhood level. Powerhouse Company and De Zwarte Hond designed the new station as an all-sided building – connective, transparent and sustainable – that is equally inviting from every angle. The impressive triangular geometry of the roof gives the building a strong identity, organizes the program and also makes a connection with the urban context.

'The strenght of the design lies in its strongly connective form.'



Stefan Prins
Partner Architect



An artisanal wooden roof

The 3,000 m² triangular roof is made entirely of wood. This is a first: it's the only example in the Netherlands where a station's roof bridging train tracks has been entirely constructed in wood. The design team took their responsibilities seriously when it came to sustainability. The choice for a natural building material also fits well with the green character of the city of Assen and its surroundings. The wooden roof creates an inviting atmosphere for travellers. Windows in the middle of the roof allow a play of sunlight on the platforms and in the station hall. The wooden roof is 10 meters high

and has three uneven sides with lengths of 78, 88 and 90 meters. A green sedum roof surface has been added along the edges for buffering rainwater. For durability and easy maintenance, the columns and roof edges are finished in a coated metal finish in a champagne colour that harmonizes with the wooden beams. By constructing the roof with freestanding columns, the program beneath can easily be adapted. This sustainable design thus provides for future changes in passenger numbers and commercial facilities in the pavilions.



Station area redesign

The new station is not isolated. It forms the most eye-catching part of the Florijn Axis, the area development that promotes the accessibility and expansion of the city of Assen and improves the connection with Assen-Oost.

The triangular station roof completely spans the newly expanded railway line and thus fulfills a key role in connecting the

eastern and western districts. The complex transport flows of the station square have been resolved with a new platform tunnel for pedestrians, the restoration and shortening of the existing bicycle tunnel, a car tunnel and an underground bicycle shed for 2,600 bicycles. This has created a pedestrian-friendly station area with high-quality greenery, minimal impact from cars and a pleasantly human scale.



The Traveller Pavilion

Transparent Social Hub

At the heart of Cumulus Park, Amsterdam's new innovation district, sits the Traveller, a sleek and organically curved pavilion. Its transparent façade is elegantly formed around a pleasant and inviting interior housing a restaurant and event space. While energizing the campus with a place for meeting and collaboration, it provides a new iconic marker to herald the developing area.

Client

EDGE and G&S Vastgoed

Location

Amsterdam, The Netherlands

Size

900 m²

Status

Completed

Typology

Hospitality

Period

2016 - 2019

Partner in Charge

Stijn Kemper





'The separation of wooden core and glass façade – at no point do they touch each other – creates an airy and flowing interior space.'



Stijn Kemper
Partner Architect

4-meter-high windows maximize transparency



Flexible spaces on the upper floor



Interiors flooded with light



Free floating

Standing freely from the expanse of glass, a wooden element at the Traveller's center contains all its functions and an upper deck with views over the restaurant. The warmth of timber continues to radiate from its gently curved larch wooden ceiling, that hovers

over a welcoming space with variations in height and openness. Exuding the comfort of a living room, an interior of rich colors and soft textures offers an intimate indoor area – relaxing and approachable.



Stairs continue from inside to outside

Blurred boundaries

Set within a campus housing ING, Amsterdam University of Applied Sciences, and Amsterdam Community College (ROC), the Traveller brings together office employees, students, entrepreneurs and neighboring residents. Designed to be seamlessly integrated with its surroundings,

differences in ground level continue within the pavilion – like the concrete stairs connecting exactly to those inside, with only the glass façade as separation – creating a dynamic relationship between the interior and the exterior.

An icon in Cumulus Park



A place for meeting

Forging the Form

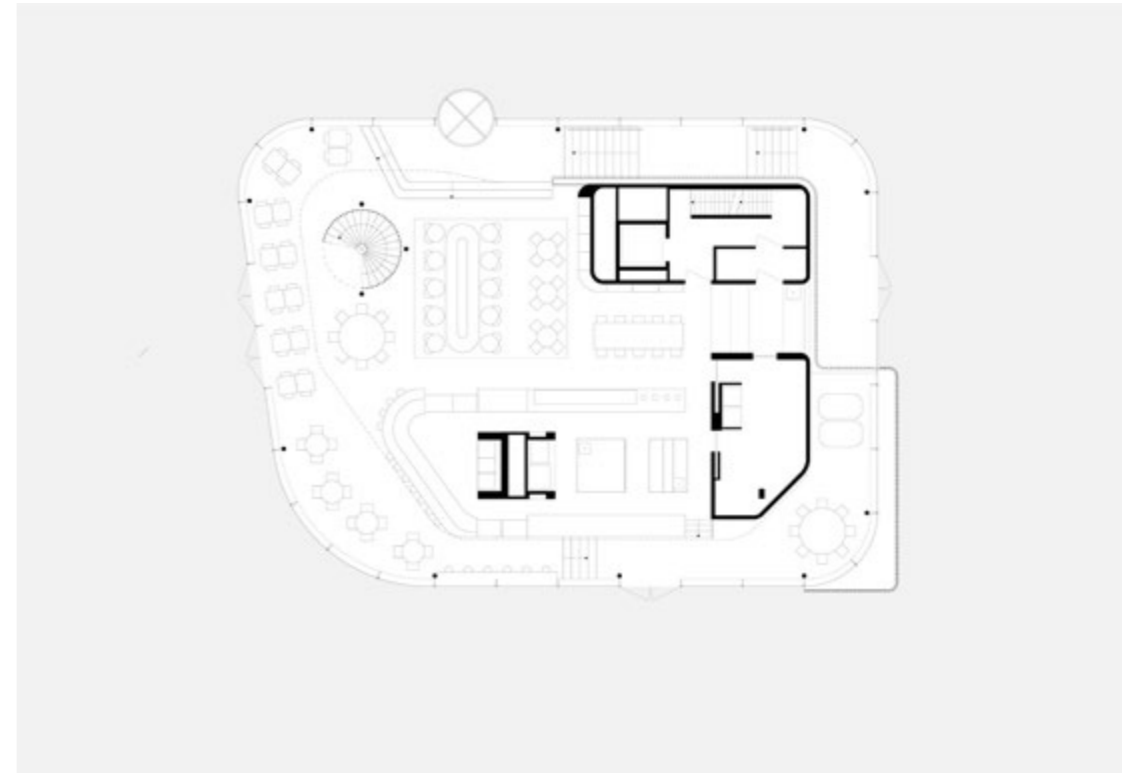
Designing the double curved wooden roof of The Traveller came with a set of complex challenges that we met by modelling the nearly 300 unique components separately.

We realized the all-around transparency of the façade - while also mitigating solar radiation - by engineering a system that combines interior sun shading with heat extraction, limiting the need for foils and triple glazing.

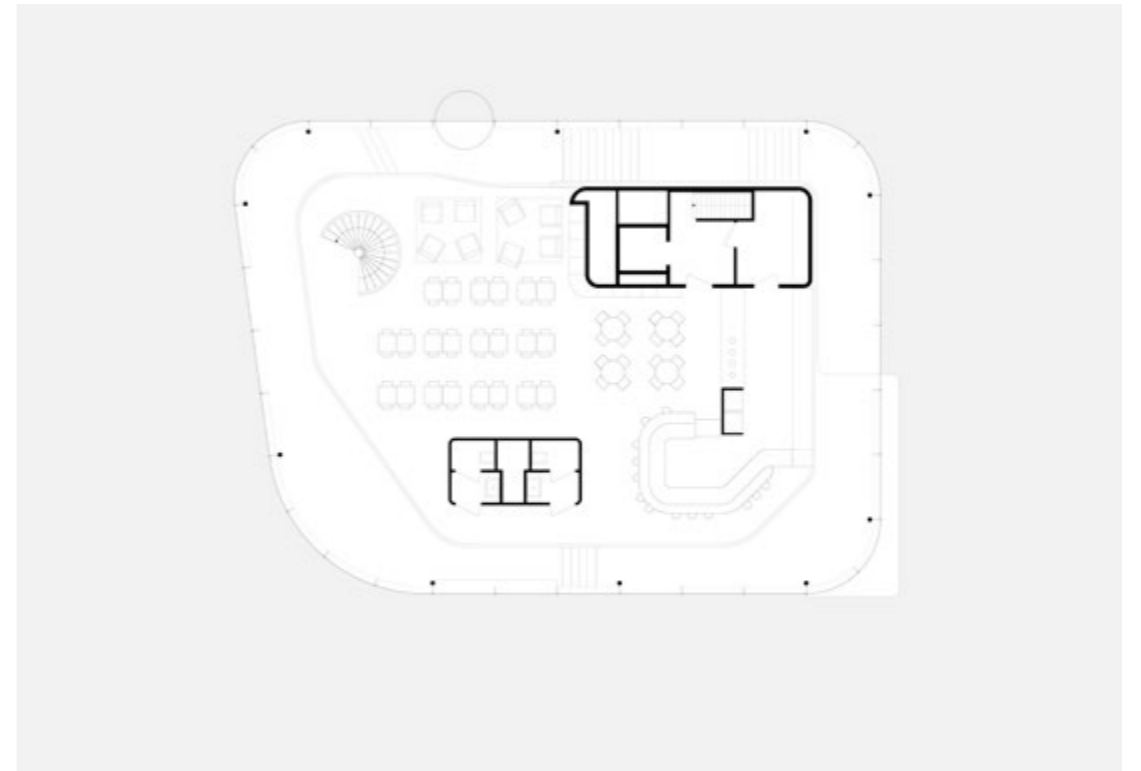


The larch roof with its double curvature

Ground floor



First floor



Koekamp

Closer to Nature

In the chain of nature reserves, Koekamp is the first link in The Hague – where deer have seen the city grow and expand for more than half a millennium. Along with Malieveld, The Hague's Forest and the Dutch Dunes National Park, Koekamp is one of the many ambitious plans of Staatsbosbeheer, to bring us closer to nature. Our design for Koekamp creates a game between architecture and nature in which the programs between the trees and their contrast with the building are in balance.

Client
Staatsbosbeheer (Dutch forestry)

Location
The Hague, NL

Size
ca 1000 m²

Status
Ongoing

Typology
Public Spaces

Period
2020 – ongoing

Partner in Charge
Paul Stavert







Embracing the environment

Where the Koekamp forms a connection on the large scale of nature reserves, we see the importance of the visitor center to also be a link on the smaller scale of the site. A gesture that should bring together education, work, and relaxation amid the trees, next to the elegant deer. It is located right next to the heart of The Hague where walking, occupation and nature conservation will take place side by side.

In our vision, the architectural quality can be found in a smart pathway and organization of the program. To increase the connection to and experience of nature, we strategically place various parts of the program in free space. With this we explicitly aim for all parts to be reached independently of each other.

Ultimately the various visitor functions will be connected to each other by a spacious and inviting roof design. Inspired by the flowing and wandering lines of Zocher's 19th century landscape design, we designed a modern-day canopy. Even though the building is nestled between the trees, we have managed to weave the building in-between them by making use of the space that is after the removal of the existing structures. This allows us to still provide pleasant, luminous outdoor spaces around the building. The result is a design with a distinctive relationship with the surrounding landscape that creates an open and inviting building that has a varied and resilient bond with the environment.

Tilburg University Lecture Hall

A Listening Space

The new lecture hall is meticulously integrated within the campus through orientation, sight lines and connection to the landscape. It is a compact building that melts functional and technical aspects with architectural quality. The building features a wood construction, achieves a high degree of circularity as well as a BREEAM Excellent certificate.

Client

Tilburg University

Location

Tilburg, The Netherlands

Size

4 000 m²

Status

Ongoing

Typology

Public space

Period

2019 – ongoing

Partner in Charge

Stefan Prins





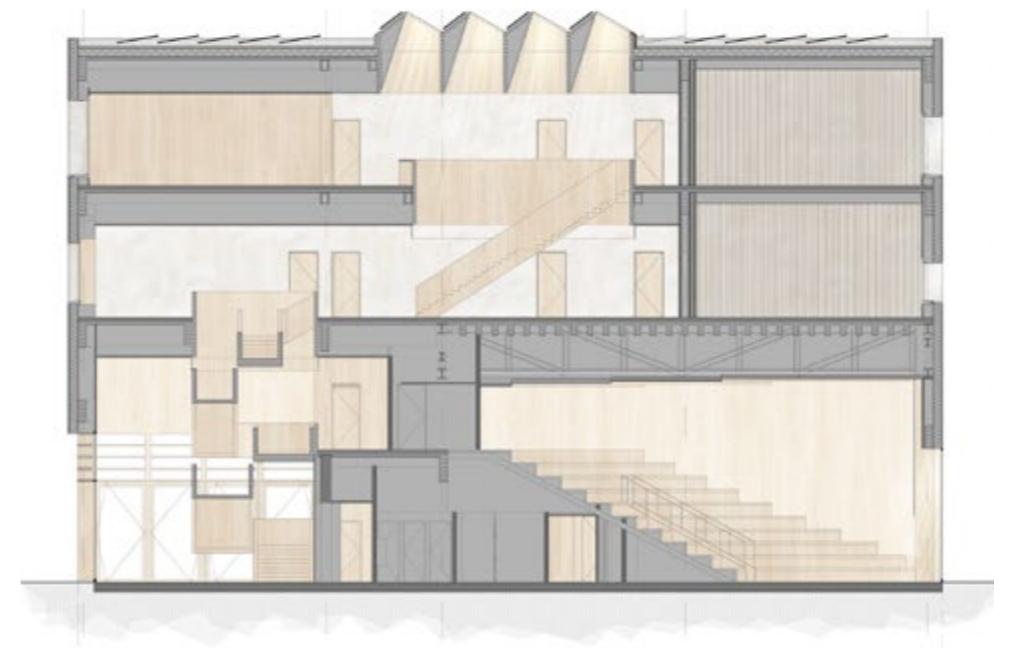
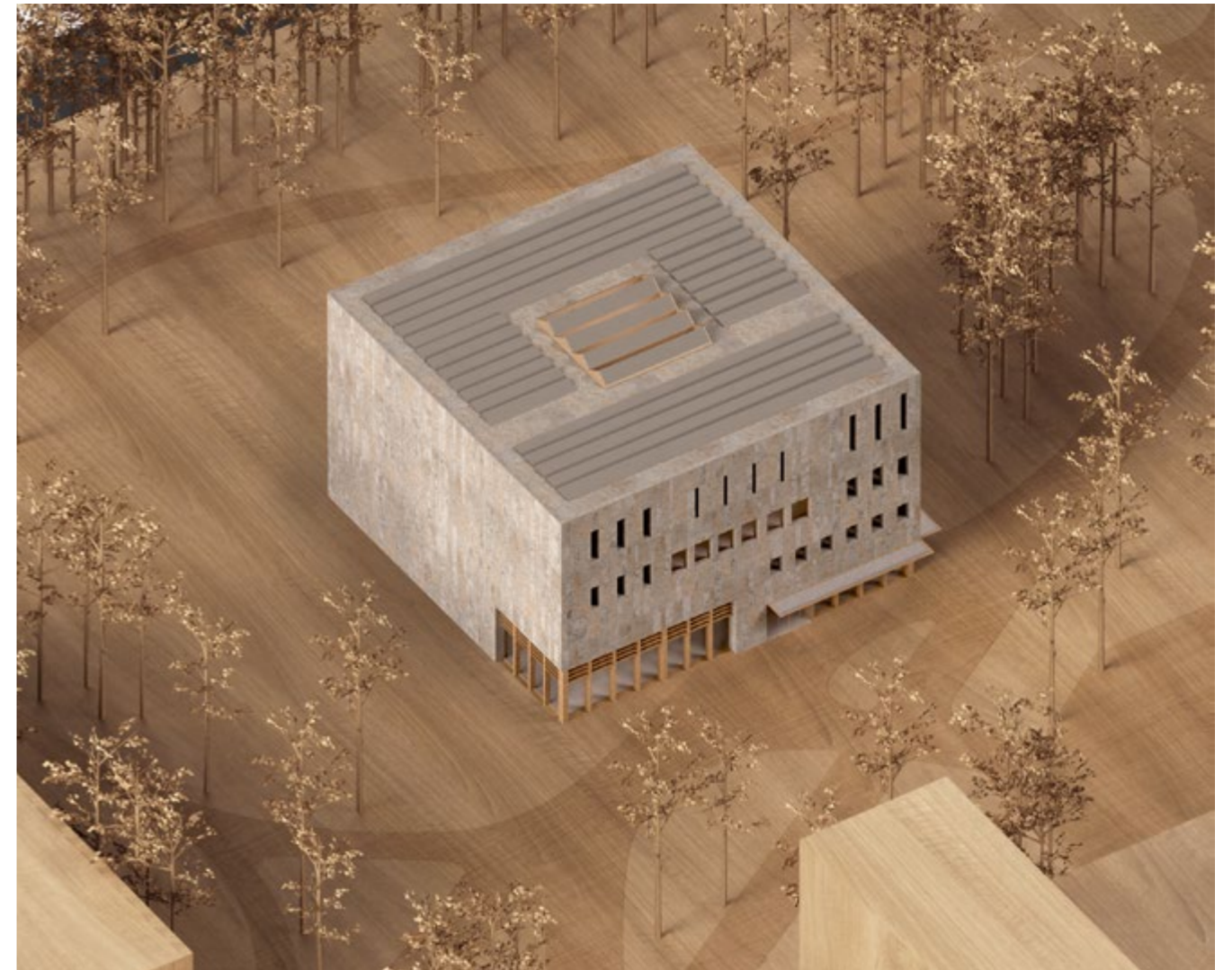
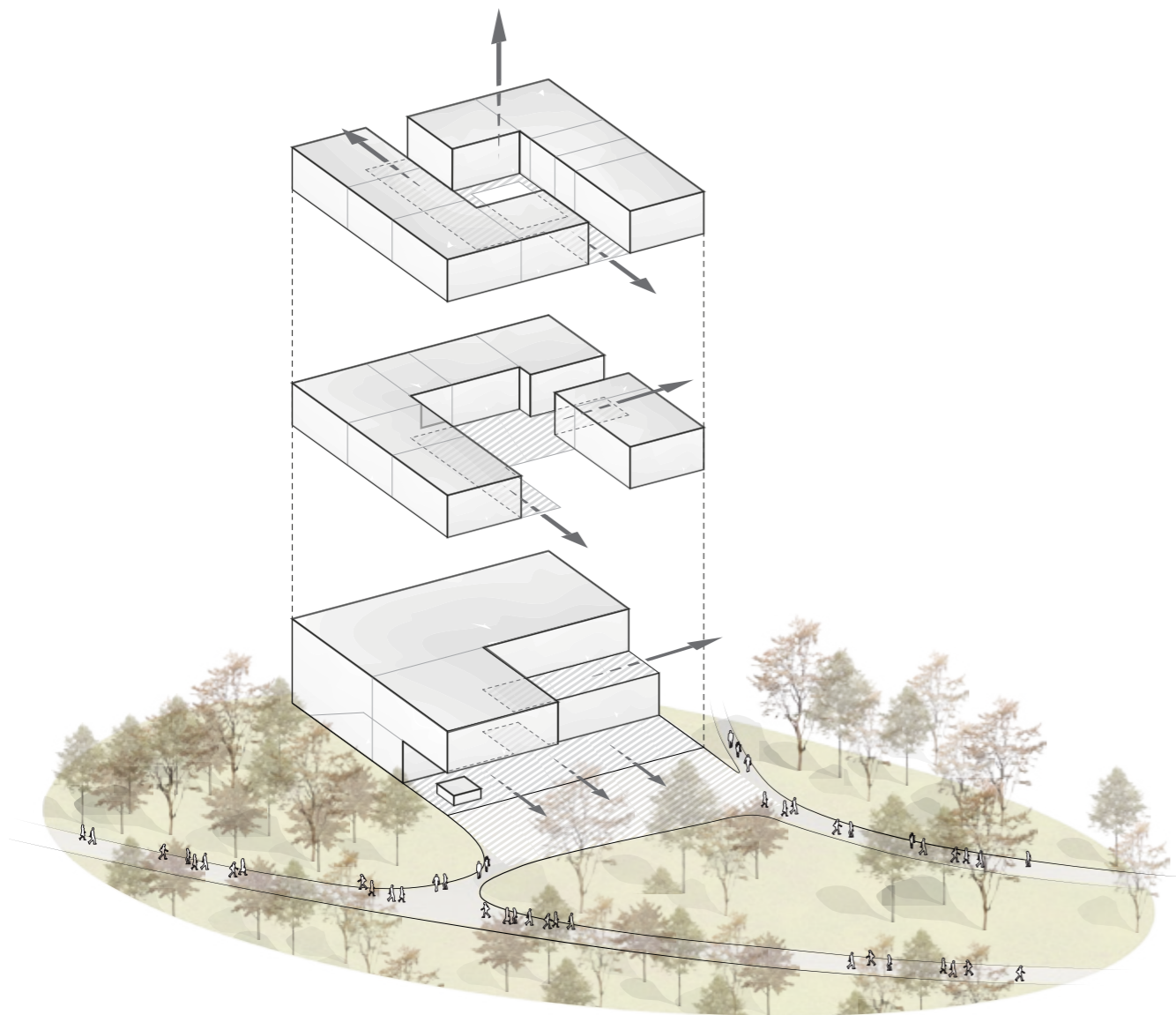
A contemplative calm

A simple palette – wood, stone and plaster – is used to achieve a wide variety of effects, from the lofty sculptural spaces of the lecture halls, to intimate window-seat niches. Austere wooden tables and benches and cruciform reading lamps in the study areas channel a cloistered aesthetic. Windows allow natural light to flood the space while playfully capturing a range of views, some unexpected – the sky, a single tree, or people walking from the train station.

The interior contains 14 lecture spaces plus study spaces, the café and bathrooms. Placing the larger spaces on the ground floor and the smaller ones above, accessed via generous staircases, gives the building a natural logic. Clear sightlines allow visitors to orientate themselves based on the landscape.

Programmatic organisation

We organize the program in such a way that the large spaces are placed on the ground floor and the smaller ones on the higher floors. This clear and functional organization ensures a well-organized building with optimum control of large student numbers. The layout is designed in such a way that you can always orient yourself on the landscape from the core, using sight lines.





Front and side facades, with different treatments based on orientation



Exposed timber with bespoke wooden furniture and lighting



Circular and Sustainable

As well as being energy-neutral, the lecture hall will be circular, as most of its components will be recyclable. Wood is used for the main supporting structure, combined with steel only when wood is insufficient for the strains placed on this kind of building. The design pushes the envelope in its use of reusable wooden rib floors that span a groundbreaking 9 m while meeting all requirements for load, acoustic

performance and fire safety regulations. Using dry, demountable systems of wooden construction means that the 4.6 km of wooden beams used will be largely reusable. Hanging the limestone panels on the facade, rather than gluing them, will allow the stone to be recycled too. The lecture hall will be an energy-neutral building and will qualify for a BREEAM outstanding certification.

Project Credits

Project Credits

P18

Floating Office Rotterdam

Structural engineer: Bartels & Vedder

MEP consultant: DWA

Project management: DVP

Contractor: FOR Building VOF

Photography: Sebastian van Damme, Mark

Seelen, Marcel IJzerman

Videography: Marcel IJzerman

Visualizations: Plomp, ATCHAIN

Floating foundation: Hercules FC

Wood structure engineer: Solid Timber

Wood structure: Dericx Gelamineerde

Houtconstructies

Building installations: Roodenburg Groep

Glass: iFS Building Systems

Steel: W. Ten Ham Constructie

Team: Nanne de Ru, Paul Sanders, Sandra

Brus Pyłczewska, Albert Takashi Richters,

Rostislav Krones, Nolly Vos, Robyne Somé,

Koen van den Dungen, Stefan de Meijer, Joppe

Kusters, Franca Houg, Sanja Kralj, Myriam Mahi,

Anne-Ragnhild Larsen, Maarten Diederix, Erwin

van Strien, Justin Tjon Kie Sim, Melissa Fourie,

Severino Iritano, Marah Wagner, Beyza Uyar

P38

Floating Office Vienna

Team: Albert Richters, Thomas Ponds, Robyne

Some, Aleksandra Gojnik, Erwin van Strien,

Kevin Chen, Virginia Pozneac, Gert Ververs,

Giovanni Coni

P48

M37 Hotel

Team: Johanne Borthne, Anne-Ragnhild Larsen

P56

Accra Hotel

Visualization: ATCHAIN

Team: Nanne de Ru, Robyne Somé, Maarten

Diederix, Azat Dzhunushev, Erwin van Strien,

Giovanni Coni, Akua Pepra, Sai Shruthi Rao

P64

Amstel Tower

Structural engineer: Imd Raadgevende

Ingenieurs: MEP consultant, Ingenieursburo

Linssen

Contractor: J.P. van Eesteren

Photography: Sebastian van Damme

Videography: Marcel IJzerman

Team: Nanne de Ru, Paul Stavert, Erwin

van Strien, Gert Ververs, Joppe Kusters,

Mitchel Veloo, Nolly Vos, Stefan de Meijer,

Ard Jan Lootens, Max Tala Nossin, Alex

Niemantsverdriet, Amber Peters, Helena Tse,

Jeffrey Ouwens, Luca Piattelli, Luke Vermeulen,

Máté Molnár, Maud Gossink, Murtada Al-Kaabi,

Paul Rikken, Pim Haring, Ruben van der Spek,

Undine Kimmel

P76

Villa B

Interior architect: Liaigre

Structural engineer: Seeberger Friedl und

Partner

MEP consultant: Ingenieur Consult ddk GmbH

Building physics: Müller-BBM GmbH

Lighting consultant: Isometrix Lighting and

Design

Project management: m3

bauprojektmanagement GmbH

Subcontractor: Ernst Interior

Photography: Bas Princen, Mark Seelen, Kim

Zwarts

Videography: Marcel IJzerman

Team: Nanne de Ru., Sander Apperlo, Franca

Houg, Donna van Milligen Bielke, Tobias Tonch,

Marco Overwijk, Amber Peters, Paul Valeanu

P88

Villa JM

Landscape architect: BTL

MEP consultant: Hoppenbrouwers

Cost consultant: Andy Janssen

Bouwkostenadvies

Contractor: Van Dinther Bouwbedrijf

Photography: Sebastian van Damme

Interior Styling: CdB Design - Caroline de Bruin

Structural and Geotechnical Engineer:

Goudstikker de Vries

Contractor Interior: RMR Interieurbouw

Team: Stijn Kemper, Angelo Haemers, Maarten

Diederix, Emma Scholten, Anne-Ragnhild

Larsen, Bjørn Andreassen, Gert Ververs, Koen

van den Dungen, Mitchel Veloo, Rick de Lange

P98

Penthouse West399

Developer: Nanne de Ru in collaboration with

Being Development

Contractor: Valleibouw

Structural engineering: BREED Integrated

Design

Glass constructor: Glasimpex Schiedam BV

in collaboration with ABT BV

Glass supplier: Glasimplex Schiedam BV

Adviseurs: Beda, Rublec, ABM, Studio Lap.

Team: Nanne de Ru, Anne-Ragnhild Larsen,

Dirk-Jan Schaap, Erwin van Strien, Marco

Overwijk, Franca Houg, Koen van den Dungen,

Nolly Vos, Remko van der Vorm, Tobias Tonch

P112

Baan Tower

Structural engineer: BREED Integrated Design,

IMD Raadgevende Ingenieurs

Team: Stefan Prins, Janneke van der Velden,

Iván Guerrero Jiménez, Mitja Kuret

P366

RISE

Developer: RED Company, Blauwhoed

Concept & design: George&Harrison

Landscape: DELVA Landscape Architecture &

Urbanism

Consultancy: DVP, Isis bouwadvies B.V. , Mees

Ruimte & Milieu

Acoustics advisor: Buro Bouwfysica

Consulting engineers: Imd raadgevende

ingenieurs, IF Technology

P126

Assen Station

Structural engineer: BREED Integrated Design

Building physics: Munnik Brandadvies

Mobility consultant: InVra plus

Contractor: Hegeman Bouw & Infra

Photography: Sebastian van Damme, Egbert

de Boer

Videography: Marcel IJzerman

Structural engineer wood: Miebach

Ingenieurbüro

Installations advisor: Adviesbureau

VanderWeele

Team: Stefan Prins, Dik Houben, Erik Roerdink

(DZH), Nanne de Ru, Maarten Diederix, Erwin

van Strien, Max Tala Nossin, Julius Kirchert,

Jeffrey Ouwens, Yoon Kyun (Peter) Lee

Paul Rikken, Katarzina Klepacz, Eric van

Keulen (DZH), Ben van der Meer (DZH), Tjeerd

Jellema (DZH), Marc Beeftink (DZH), Chris ten

Have (DZH), Martijn Korendijk (DZH), Freddy

Siekmans (DZH), Martine Drijftholt (DZH), Kris

Schaasberg (DZH), Richard Vrijland (DZH)

P136

The Traveller

Interior architect: Powerhouse Company,

Studio BvanB, Office RBGV

Structural engineer: Van Rossum Raadgevende

Ingenieurs

MEP consultant: Deerns Raadgevende

Ingenieurs

Cost consultant: Basalt

Contractor: G&S Bouw, Intera Interieurbouw

Light Designer, Studio Rublek

Building physics & fire safety: DGMR

Project management interior design: JOBS

Project Management - Jacob den Besten

Project initiator: ING

Team: Stijn Kemper, Nanne de Ru, Stefan

de Meijer, Gerben Knol, Bjørn Andreassen,

Erwin van Strien, Franca Houg, Gert Ververs,

Koen van den Dungen, Robbert Verheij, Alex

Niemantsverdriet, Fernando Diez, Helena Tse,

Lesia Topolnyk, Max Tala Nossin, Melanie Lo,

Mike Hansen, Peter Lee, Rafael Zarza García,

Thowalfakar Humady

P146

Koekamp

Structural Engineering: Lüning Timber

Engineering

MEP advisor: Royal Haskoning DHV Engineering

Landscape design: Delva Landscape Architects

P152

Tilburg University Lecture

Landscape architect: EDM Tuin en Landschap

Urban planner: Studio Hartzema

MEP FP/A: Royal HaskoningDHV

Structural Engineer: BREED Integrated Design

Cost consultant: Multibouwadvies

Team: Stefan Prins, Janneke van der Velden,

Ivan Guerrero Jimenez, Antonia Pahankova,

Romano van den Dool, Martijn Ravia, Michiel

Bos, Sanja Kralj, Robert Cuijpers

Rotterdam

Antoine Platekade 1000

3072 ME Rotterdam, The Netherlands

+31 10 404 67 89

Oslo

Waldemar Thranes gate 84c

0175 Oslo, Norway

+47 95 757 996

München

Bavariaring 26

80336 München, Germany

+49 89 212 363 50

Powerhouse Company

office@powerhouse-company.com

www.powerhouse-company.com

We give meaning to space.